

Message Implementation Guide for GestTab

Programme	Luxembourg Customs Clearance System
Subject	Technical Documentation
Version	4.00
Release date	24-03-2025
Document reference	LUCCS-MIG-GESTTAB



TABLE OF CONTENTS

1 DOCUMENT HISTORY	4
2 ABBREVIATIONS AND ACRONYMS	5
3 INTRODUCTION	6
4 REGISTRATION PROCEDURE	7
4.2 PROCEDURE.....	7
4.2 CONTACT PERSONS.....	7
5 BUSINESS PROCESSES.....	8
5.1 INSERT NEW PACKAGING & NEW PRICE CATEGORIES	8
5.1.1 INSERT NEW PACKAGING	8
5.1.2 INSERT NEW PRICE CATEGORY	12
5.1.3 HANDLE “DE PUTATUM” PRICE REQUESTS	14
5.2 CREATE NEW COMMERCIAL BRANDS.....	17
5.3 QUOTA MANAGEMENT	20
5.3.1 HANDLE QUOTA MODIFICATION	20
5.3.2 HANDLE YEARLY QUOTA.....	23
5.4 TAX SIGN ORDER.....	24
5.4.1 TAX SIGN ORDER.....	24
5.4.2 TAX SIGN ORDER REGULARISATION.....	27
5.5 WAREHOUSE ENTRY DECLARATION	29
5.5.1 WAREHOUSE ENTRY DECLARATION.....	29
5.5.2 WAREHOUSE ENTRY DECLARATION REGULARISATION	32
5.6 DAILY EXIT & DECLARATION OF CONSUMPTION	34
5.6.1 DAILY EXIT	34
5.6.2 DAILY EXIT AMENDMENT	37
5.6.3 AC4 DECLARATION	37
5.6.4 AC4 DECLARATION REGULARISATION	40



5.7	LODGE DECLARATION OF CONSUMPTION IN/OUT	42
5.8	HANDLE LOSS OF TAX SIGNS	45
5.9	EXCISE-FREE TAX SIGN ORDER	48
5.10	BULK PRODUCTS	51
5.10.1	HANDLE ENTRY & EXIT OF BULK PRODUCTS	51
5.10.2	HANDLE WAREHOUSE ENTRY DECLARATION FROM BULK PRODUCTS	54
5.11	HANDLE DESTRUCTIONS	57
5.12	INVALIDATIONS	60
5.13	NOTIFY RIGHT TO REPAYMENT / REMITTANCE	64
5.14	NOTIFY INVALIDATION OR EXPIRY OF TAX SIGNS	65
5.15	NOTIFY AUTHORISED WAREHOUSEKEEPER OF CUSTOMS MOVEMENT CREATION	67
5.16	SUSPEND ACTIVITIES OF AUTHORISED WAREHOUSEKEEPER	68
5.17	DEACTIVATE AUTHORISED WAREHOUSEKEEPER ACCOUNT	69
6	APPENDIX	70
6.1	BUSINESS PROCESSES	70
6.1.1	DESCRIPTION	70
6.1.2	LOCATION	70
6.2	XSD SCHEMAS	70
6.2.1	DESCRIPTION	70
6.2.2	LOCATION	70
6.3	CODE LISTS	70
6.3.1	DESCRIPTION	70
6.3.2	LOCATION	70
6.4	VALIDATION RULES	71
6.4.1	DESCRIPTION	71
6.4.2	LOCATION	71



1 DOCUMENT HISTORY

Version	Release Date	Description
1.00	06/02/2024	Initial version – It describes the interfaces and processes available in GestTab
2.00	16/05/2024	Second version – It complements the initial version and describes the interfaces and processes which have been added for the second prototype
3.00	02/10/2024	Third version – It complements the second version and describes the interfaces and process which were developed during the three prototypes
4.00	24/03/2025	Fourth version – Updates to commercial brand process and introduction of monthly declaration of consumption.



2 ABBREVIATIONS AND ACRONYMS

Abbreviation	Meaning
GESTTAB	Tobacco Management (« Gestion de tabac »)
ADA	Customs and Excise Administration
LUCCS	Luxembourg Customs Clearance System
EO	Economic Operator
XSD	XML Schema Definition

Table 1: Abbreviations and Acronyms



3 INTRODUCTION

The purpose of this document is to define and illustrate the message exchanges between the Luxembourgish Customs Clearance System (LUCCS) and the economic operator systems in the context of GESTTAB.

The following sections describe and illustrate the different activity flows of the GESTTAB processes.

In addition to this document, all the technical specifications for message design and production are available in the appendix.



4 REGISTRATION PROCEDURE

4.2 PROCEDURE

The registration procedure is available on the Luxembourgish Customs Administration website:

<https://douanes.public.lu/>

4.2 CONTACT PERSONS

Contact	Role	Email	Tel
Service Desk ADA	Support technique et fonctionnel	servicedesk@do.etat.lu	+352 2818 2000

5 BUSINESS PROCESSES

The processes for which messages are exchanged directly between the EO system and LUCCS are described in this section. The focus is on the messages exchanged during the process.

The diagrams illustrating the message flows are available in multiple formats in the "Appendix" folder ("1. Business processes" subfolder).

5.1 INSERT NEW PACKAGING & NEW PRICE CATEGORIES

The economic operator has the possibility to request the insertion of a new packaging or a new price category via NTP/B2G.

Please note that the same message is used to request the insertion of a new packaging or a new price category in GESTTAB. The "Request type" in the Packaging Price Request message is used to differentiate between the requests. To request a new packaging, the code T01 (= New packaging) must be used as request type. Note however that the request for new packaging must include at least one price to associate to the new packaging. To request a new price category for an existing packaging, the code T02 (= New price) must be used. Tobacco producers also have the possibility to request a new "de putatum" price category for an existing packaging by using the code T03 (= New "de putatum" price). A Packaging Price Request message cannot reference different codes at the same time.

5.1.1 INSERT NEW PACKAGING

This section describes the activities and messages involved in the "Insert new packaging" process. The activities and message flows are illustrated in Figure 1 whilst Table 2 provides details about each activity.

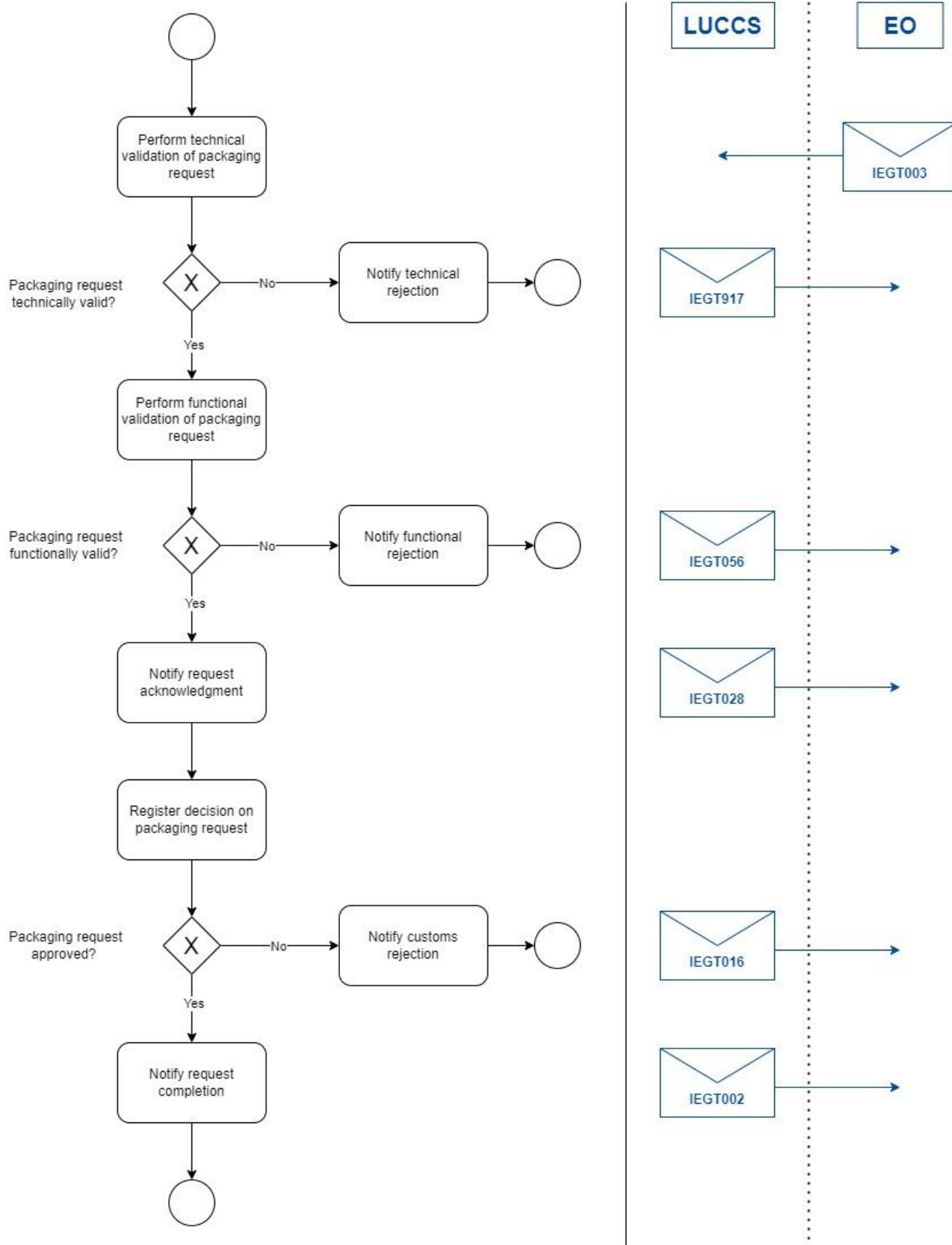


Figure 1: Insert new packaging – Messages & Flow



Activity	Description	Involved message(s)
Receive packaging request	<p>This activity corresponds to the reception of a Packaging Price Request with "Request type" = T01.</p> <p>There are two possible outcomes:</p> <ul style="list-style-type: none">• The message is technically and functionally valid: the flow moves on.• The message is technically or functionally invalid: the message is rejected, and the economic operator is notified.	<p>IEGT003: Packaging Price Request [EO to LUCCS]</p> <p>This message is submitted by the economic operator to request the insertion of a new packaging.</p> <p>The structure of this message is defined in "CCGT003A.xsd".</p>
Notify technical or functional rejection	<p>If the received packaging request is technically invalid because the message structure is not respected, a technical rejection message is sent to the EO.</p> <p>If at least one business rule fails for the received packaging request, a functional rejection message is sent to the EO.</p> <p>These rejection messages contain a correlation identifier corresponding to the message identifier of the packaging request.</p>	<p>IEGT917: Technical Rejection [LUCCS to EO]</p> <p>This message is issued to inform the economic operator that the received message has been rejected due to a technical error (XSD validation failure).</p> <p>The structure of this message is defined in "CCGT917A.xsd".</p> <p>IEGT056: Functional Rejection [LUCCS to EO]</p> <p>This message is sent to the economic operator to notify him that the received message has been rejected due to a functional reason. The message contains a list of functional errors.</p> <p>The structure of this message is defined in "CCGT056A.xsd".</p>
Notify request acknowledgment	<p>If the received packaging request is technically and functionally valid, it is registered in the system and the economic operator is notified about the successful reception.</p>	<p>IEGT028A: Request Acknowledgment [LUCCS to EO]</p> <p>This message is sent to the economic operator to indicate that the request has been successfully received.</p> <p>The structure of this message is defined in "CCGT028A.xsd".</p>
Register decision on packaging request	<p>Whenever a valid Packaging Price Request message with "Request type" = T01 is received, a manual decision must be registered by the TAXUD officer regarding the request.</p> <p>The TAXUD officer can either approve or reject the request.</p>	N/A



Notify customs rejection	If the packaging request is rejected by a TAXUD officer, the economic operator must be informed about the rejection.	IEGT016A: Customs Rejection [LUCCS to EO] This message is issued in case a packaging request is rejected by a customs officer. The structure of this message is defined in "CCGT016A.xsd".
Notify request completion	Once the packaging request was approved and successfully processed by the system, the economic operator must be notified about the successful completion of the request.	IEGT002A: Request Completion Notification [LUCCS to EO] This notification is issued following the completion of the request to notify the economic operator that the request was successfully processed. The structure of this message is defined in "CCGT002A.xsd".

Table 2: Insert new packaging – Task descriptions

5.1.2 INSERT NEW PRICE CATEGORY

This section describes the activities and messages involved in the “Insert new price category” process. The activities and message flows are illustrated in Figure 2 whilst Table 3 provides details about each activity.

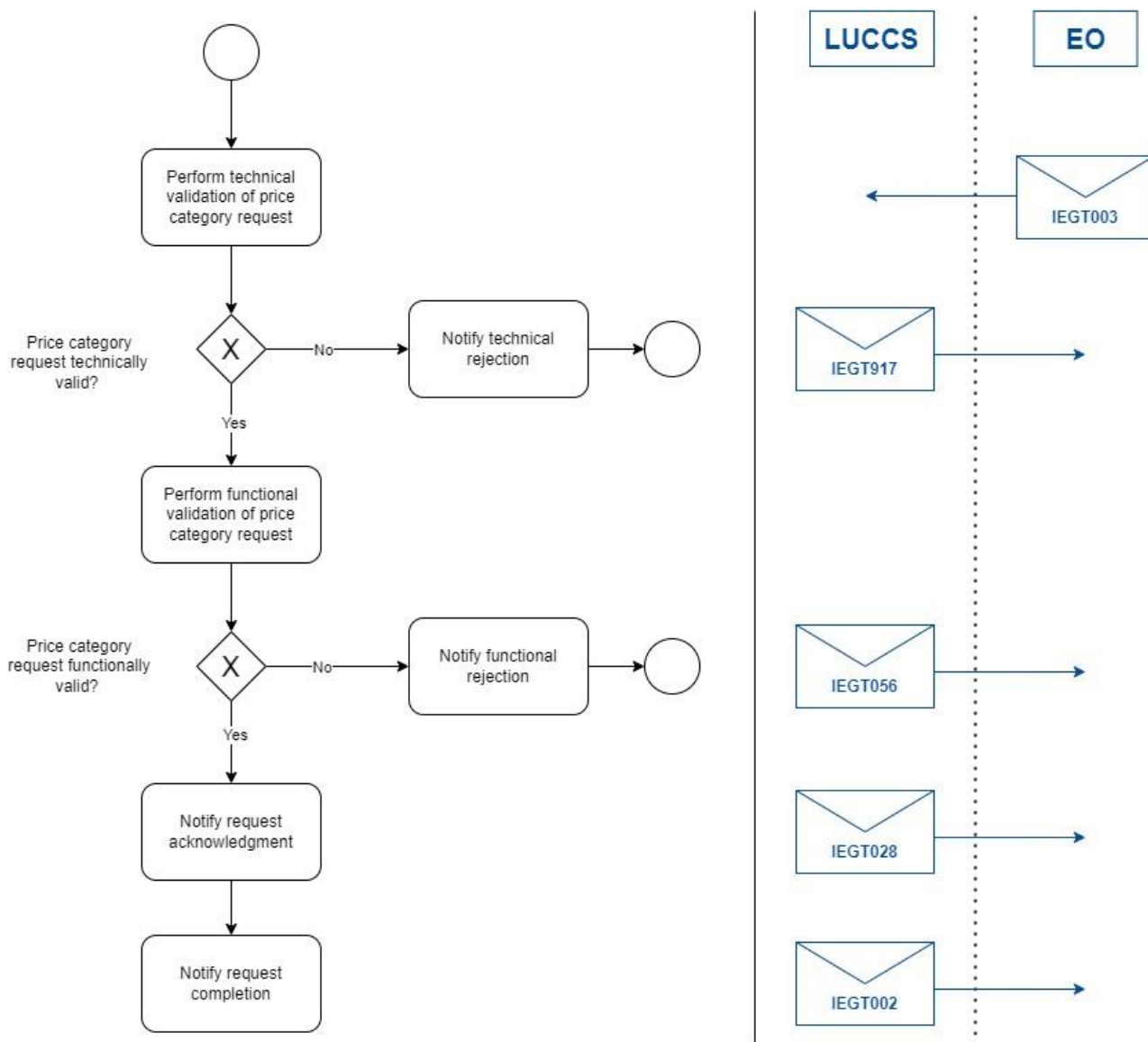


Figure 2: Insert new price category – Messages & Flow

Activity	Description	Involved message(s)
Receive price category request	<p>This activity corresponds to the reception of a Packaging Price Request with "Request type" = T02.</p> <p>There are two possible outcomes:</p> <ul style="list-style-type: none"> The message is technically and functionally valid: the flow moves on. The message is technically or functionally invalid: the message is rejected, and the economic operator is notified. 	<p>IEGT003: Packaging Price Request [EO to LUCCS]</p> <p>This message is submitted by the economic operator to request the insertion of a new price category.</p> <p>The structure of this message is defined in "CCGT003A.xsd".</p>
Notify technical or functional rejection	<p>If the received price category request is technically invalid because the message structure is not respected, a technical rejection message is sent to the EO.</p> <p>If at least one business rule fails for the received price category request, a functional rejection message is sent to the EO.</p> <p>These rejection messages contain a correlation identifier corresponding to the message identifier of the price category request.</p>	<p>IEGT917: Technical Rejection [LUCCS to EO]</p> <p>This message is issued to inform the economic operator that the received message has been rejected due to a technical error (XSD validation failure).</p> <p>The structure of this message is defined in "CCGT917A.xsd".</p> <p>IEGT056: Functional Rejection [LUCCS to EO]</p> <p>This message is sent to the economic operator to notify him that the received message has been rejected due to a functional reason. The message contains a list of functional errors.</p> <p>The structure of this message is defined in "CCGT056A.xsd".</p>
Notify request acknowledgment	<p>If the received price category request is technically and functionally valid, it is registered in the system and the economic operator is notified about the successful reception.</p>	<p>IEGT028A: Request Acknowledgment [LUCCS to EO]</p> <p>This message is sent to the economic operator to indicate that the request has been successfully received.</p> <p>The structure of this message is defined in "CCGT028A.xsd".</p>
Notify request completion	<p>The price category request is not subject to a manual decision by the TAXUD officer and is automatically approved by the system.</p> <p>Once the price category request was successfully processed by the system, the economic operator must be notified about the successful completion of the request.</p>	<p>IEGT002A: Request Completion Notification [LUCCS to EO]</p> <p>This notification is issued following the completion of the request to notify the economic operator that the request was successfully processed.</p> <p>The structure of this message is defined in "CCGT002A.xsd".</p>

Table 3: Insert new price category – Task descriptions



5.1.3 HANDLE “DE PUTATUM” PRICE REQUESTS

This section describes the activities and messages involved in the “Handle “de putatum” price requests” process. As described previously, “de putatum” prices can only be requested by tobacco producers. The activities and message flows are illustrated in Figure 3 whilst Table 4 provides details about each activity.

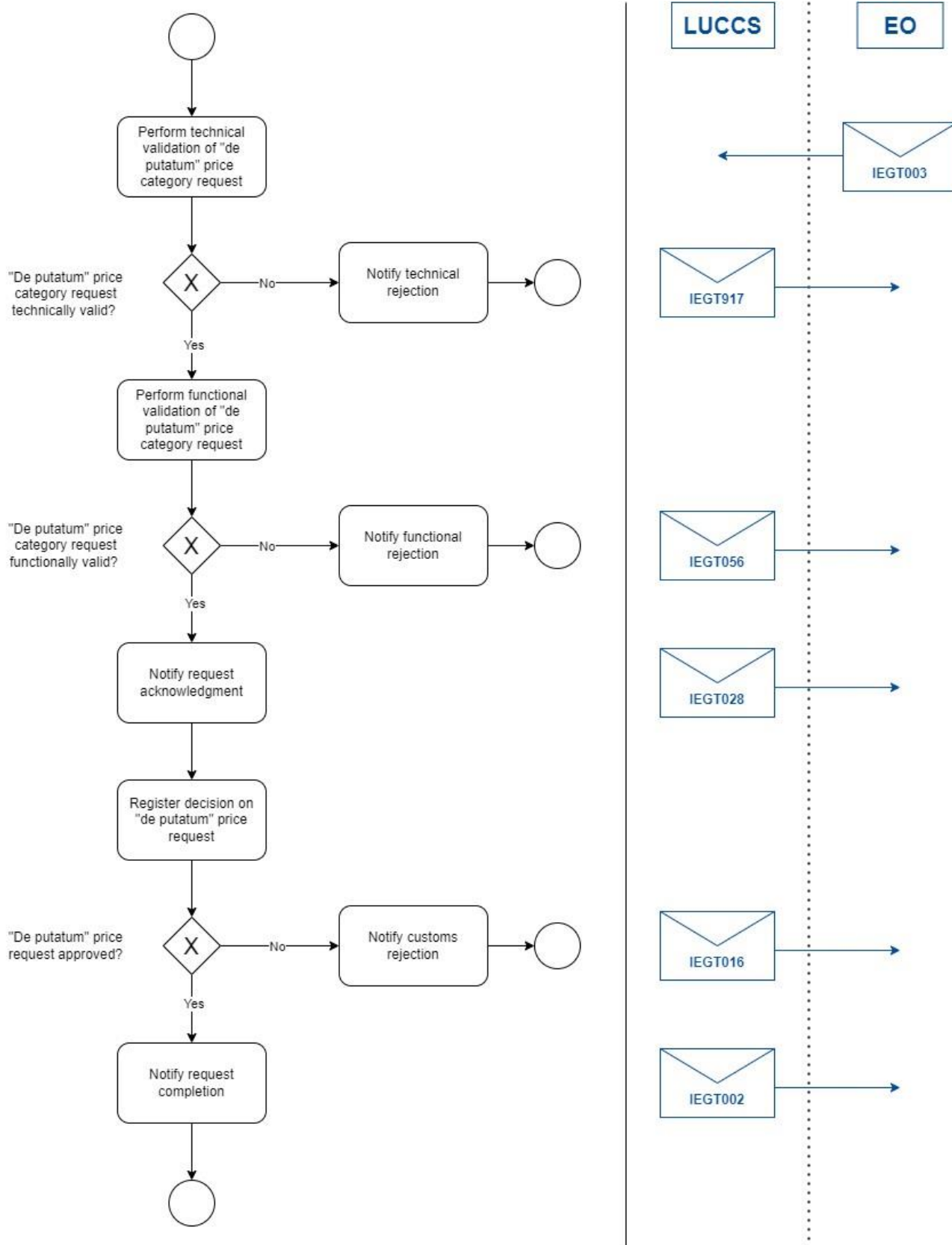


Figure 3: Handle "de putatum" price requests – Messages & Flow



Activity	Description	Involved message(s)
Receive “de putatum” price request	<p>This activity corresponds to the reception of a Packaging Price Request with “Request type” = T03.</p> <p>There are two possible outcomes:</p> <ul style="list-style-type: none">• The message is technically and functionally valid: the flow moves on.• The message is technically or functionally invalid: the message is rejected, and the economic operator is notified.	<p>IEGT003: Packaging Price Request [EO to LUCCS]</p> <p>This message is submitted by the economic operator to request the insertion of a new “de putatum” price category.</p> <p>The structure of this message is defined in “CCGT003A.xsd”.</p>
Notify technical or functional rejection	<p>If the received “de putatum” price request is technically invalid because the message structure is not respected, a technical rejection message is sent to the EO.</p> <p>If at least one business rule fails for the received “de putatum” price request, a functional rejection message is sent to the EO.</p> <p>These rejection messages contain a correlation identifier corresponding to the message identifier of the “de putatum” price request.</p>	<p>IEGT917: Technical Rejection [LUCCS to EO]</p> <p>This message is issued to inform the economic operator that the received message has been rejected due to a technical error (XSD validation failure).</p> <p>The structure of this message is defined in “CCGT917A.xsd”.</p> <p>IEGT056: Functional Rejection [LUCCS to EO]</p> <p>This message is sent to the economic operator to notify him that the received message has been rejected due to a functional reason. The message contains a list of functional errors.</p> <p>The structure of this message is defined in “CCGT056A.xsd”.</p>
Notify request acknowledgment	<p>If the received “de putatum” price request is technically and functionally valid, it is registered in the system and the economic operator is notified about the successful reception.</p>	<p>IEGT028A: Request Acknowledgment [LUCCS to EO]</p> <p>This message is sent to the economic operator to indicate that the request has been successfully received.</p> <p>The structure of this message is defined in “CCGT028A.xsd”.</p>
Register decision on “de putatum” price request	<p>In case a valid “de putatum” price request is received a manual decision must be registered by the TAXUD officer.</p> <p>The TAXUD officer can either approve or reject the request.</p>	N/A

Notify customs rejection	If the “de putatum” price request is rejected by a TAXUD officer, the economic operator must be informed about the rejection.	IEGT016A: Customs Rejection [LUCCS to EO] This message is issued in case a “de putatum” price request is rejected by a customs officer. The structure of this message is defined in “CCGT016A.xsd”.
Notify request completion	Once the “de putatum” price request was approved and successfully processed by the system, the economic operator must be notified about the successful completion of the request.	IEGT002A: Request Completion Notification [LUCCS to EO] This notification is issued following the completion of the request to notify the economic operator that the request was successfully processed. The structure of this message is defined in “CCGT002A.xsd”.

Table 4: Handle “de putatum” price requests – Task descriptions

5.2 CREATE NEW COMMERCIAL BRANDS

The economic operator has the possibility to request the creation of new commercial brands or the association of price categories to existing commercial brands via NTP/B2G.

The same message is used to request the creation of new commercial brands and the association of price categories to existing commercial brands in GESTTAB. The “Request type” in the Commercial Brand Request message is used to differentiate between the two scenarios.

To seek the creation of new commercial brands, the code C01 (= New commercial brand) must be used as request type. To request the association of price categories with existing commercial brands, the code C02 (= Association to existing brand) must be used. Similarly, it is also possible to ask for the disassociation of price categories and commercial brands if such a link was created previously. Moreover, when requesting the creation of a new commercial brand, it is also possible to already ask for the association of price categories to the new commercial brand.

This section describes the activities and messages involved in the “Create new commercial brands” process. The activities and message flows are illustrated in Figure 4 whilst Table 5 provides details about each activity.

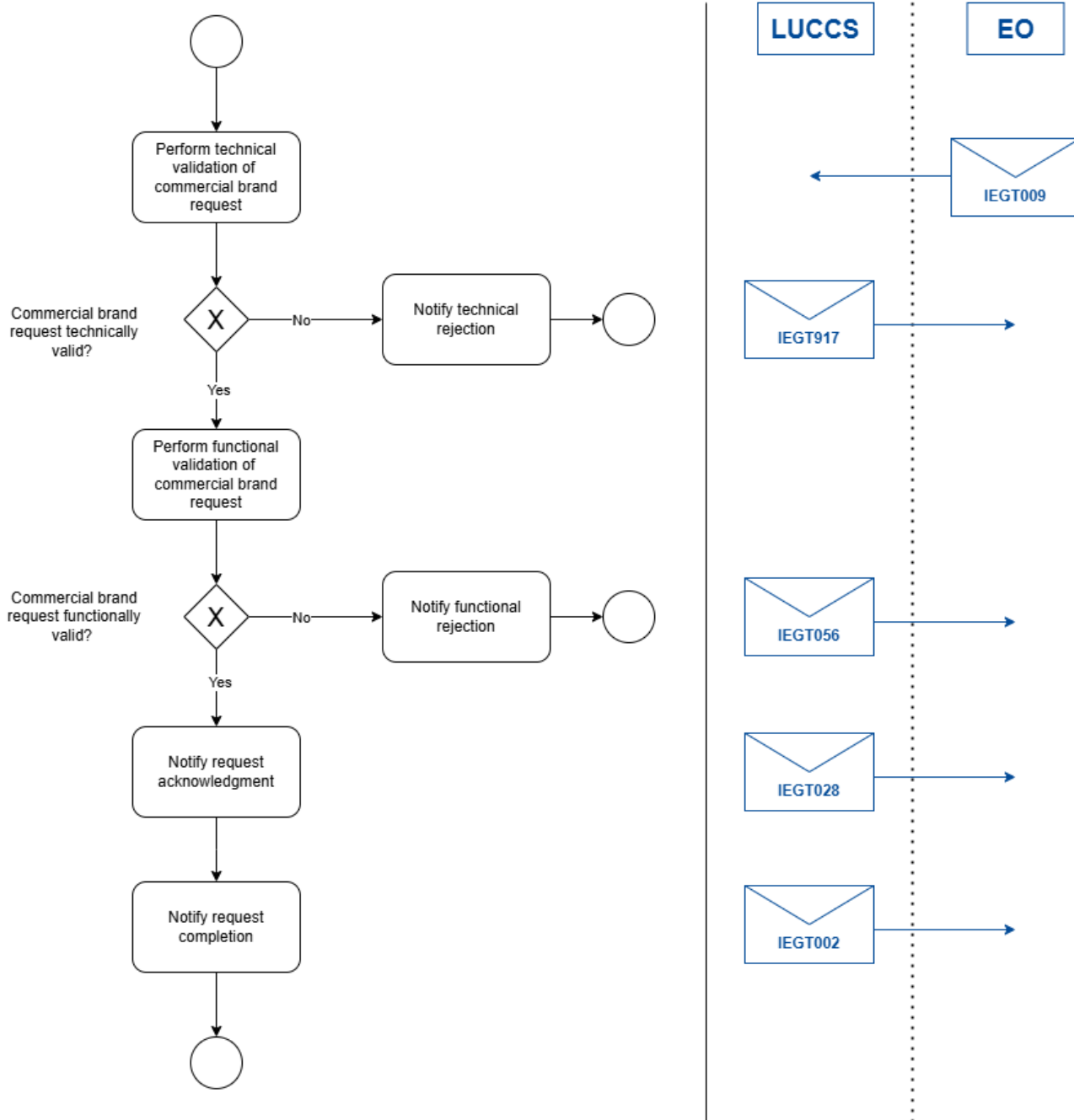


Figure 4: Create new commercial brands – Messages & Flow

Activity	Description	Involved message(s)
Receive commercial brand request	<p>This activity corresponds to the reception of a Commercial Brand Request with "Request type" = C01 or C02.</p> <p>There are two possible outcomes:</p> <ul style="list-style-type: none"> The message is technically and functionally valid: the flow moves on. The message is technically or functionally invalid: the message is rejected, and the economic operator is notified. 	<p>IEGT009: Commercial Brand Request [EO to LUCCS]</p> <p>This message is submitted by the economic operator to request the insertion of a new commercial brand or the link / unlink of this brand to price categories.</p> <p>The structure of this message is defined in "CCGT009A.xsd".</p>
Notify technical or functional rejection	<p>If the received commercial brand request is technically invalid because the message structure is not respected, a technical rejection message is sent to the EO.</p> <p>If at least one business rule fails for the received commercial brand request, a functional rejection message is sent to the EO.</p> <p>These rejection messages contain a correlation identifier corresponding to the message identifier of the commercial brand request.</p>	<p>IEGT917: Technical Rejection [LUCCS to EO]</p> <p>This message is issued to inform the economic operator that the received message has been rejected due to a technical error (XSD validation failure).</p> <p>The structure of this message is defined in "CCGT917A.xsd".</p> <p>IEGT056: Functional Rejection [LUCCS to EO]</p> <p>This message is sent to the economic operator to notify him that the received message has been rejected due to a functional reason. The message contains a list of functional errors.</p> <p>The structure of this message is defined in "CCGT056A.xsd".</p>
Notify request acknowledgment	<p>If the received commercial brand request is technically and functionally valid, it is registered in the system and the economic operator is notified about the successful reception.</p>	<p>IEGT028A: Request Acknowledgment [LUCCS to EO]</p> <p>This message is sent to the economic operator to indicate that the request has been successfully received.</p> <p>The structure of this message is defined in "CCGT028A.xsd".</p>
Notify request completion	<p>Once the commercial brand request was approved and successfully processed by the system, the economic operator must be notified about the successful completion of the request.</p>	<p>IEGT002A: Request Completion Notification [LUCCS to EO]</p> <p>This notification is issued following the completion of the request to notify the economic operator that the request was successfully processed.</p> <p>The structure of this message is defined in "CCGT002A.xsd".</p>

Table 5: Create new commercial brands – Task descriptions



5.3 QUOTA MANAGEMENT

The economic operator has the possibility to request a quota increase via NTP/B2G.

To request a quota increase, the Quota Increase Request message is used with “Request type” set to Q01 (= Quota increase). Note that the economic operator can only ask for the increase of active quotas. It is not possible to request decreases in quota and no increase can be requested for planned or expired quotas.

Moreover, the economic operator is notified of any changes made on its quotas via the Quota Update Notification message. It can concern an increase of an existing quota or the definition of a new quota.

A new quota is for example calculated once a year by the system and granted to the economic operator by the TAXUD officer.

5.3.1 HANDLE QUOTA MODIFICATION

This section describes the activities and messages involved in the “Handle quota modification” process. The activities and message flows are illustrated in Figure 5 whilst Table 6 provides details about each activity.

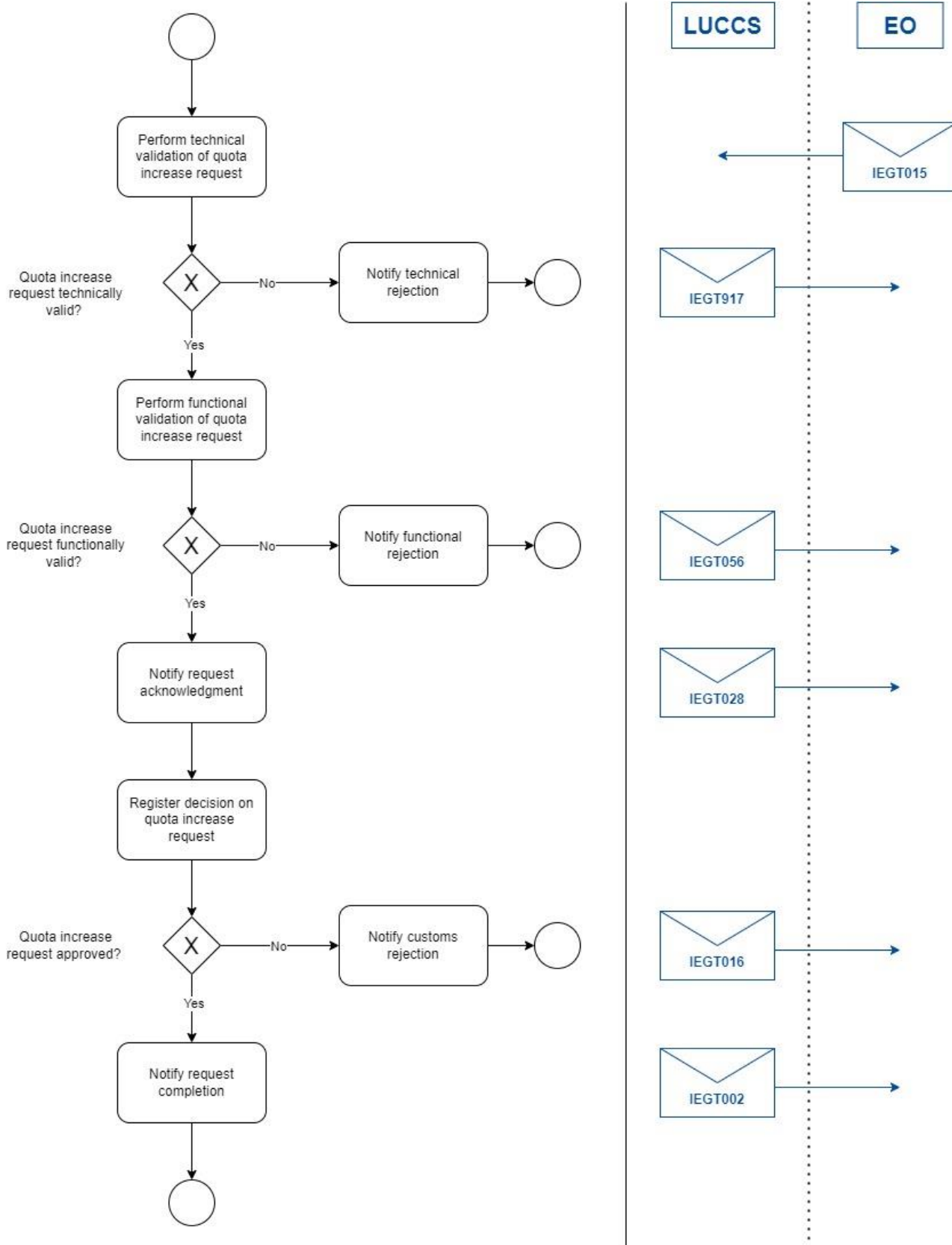


Figure 5: Handle quota modification – Messages & Flow



Activity	Description	Involved message(s)
Receive quota increase request	<p>This activity corresponds to the reception of a Quota Increase Request with "Request type" = Q01.</p> <p>There are two possible outcomes:</p> <ul style="list-style-type: none">• The message is technically and functionally valid: the flow moves on.• The message is technically or functionally invalid: the message is rejected, and the economic operator is notified.	<p>IEGT015: Quota Increase Request [EO to LUCCS]</p> <p>This message is submitted by the economic operator to order tax signs.</p> <p>The structure of this message is defined in "CCGT015A.xsd".</p>
Notify technical or functional rejection	<p>If the received quota increase request is technically invalid because the message structure is not respected, a technical rejection message is sent to the EO.</p> <p>If at least one business rule fails for the received quota increase request, a functional rejection message is sent to the EO.</p> <p>These rejection messages contain a correlation identifier corresponding to the message identifier of the quota increase request.</p>	<p>IEGT917: Technical Rejection [LUCCS to EO]</p> <p>This message is issued to inform the economic operator that the received message has been rejected due to a technical error (XSD validation failure).</p> <p>The structure of this message is defined in "CCGT917A.xsd".</p> <p>IEGT056: Functional Rejection [LUCCS to EO]</p> <p>This message is sent to the economic operator to notify him that the received message has been rejected due to a functional reason. The message contains a list of functional errors.</p> <p>The structure of this message is defined in "CCGT056A.xsd".</p>
Notify request acknowledgment	<p>If the received quota increase request is technically and functionally valid, it is registered in the system and the economic operator is notified about the successful reception.</p>	<p>IEGT028A: Request Acknowledgment [LUCCS to EO]</p> <p>This message is sent to the economic operator to indicate that the request has been successfully received.</p> <p>The structure of this message is defined in "CCGT028A.xsd".</p>
Register decision on quota increase request	<p>In case a valid quota increase request is received a manual decision must be registered by the TAXUD officer.</p> <p>The TAXUD officer can either approve or reject the request.</p>	N/A

Notify customs rejection	If the quota increase request is rejected by the TAXUD officer, the economic operator must be informed about the rejection.	IEGT016A: Customs Rejection [LUCCS to EO] This message is issued in case a quota increase request is rejected by a customs officer. The structure of this message is defined in "CCGT016A.xsd".
Notify request completion	Once the quota increase was approved and successfully processed by the system, the economic operator must be notified about the successful completion of the request.	IEGT002A: Request Completion Notification [LUCCS to EO] This notification is issued following the completion of the request to notify the economic operator that the request was successfully processed. The structure of this message is defined in "CCGT002A.xsd".

Table 6: Handle quota modification – Task descriptions

5.3.2 HANDLE YEARLY QUOTA

This section describes the activities and messages involved in the "Handle yearly quota" process. The activities and message flows are illustrated in Figure 6 whilst Table 7 provides details about each activity.

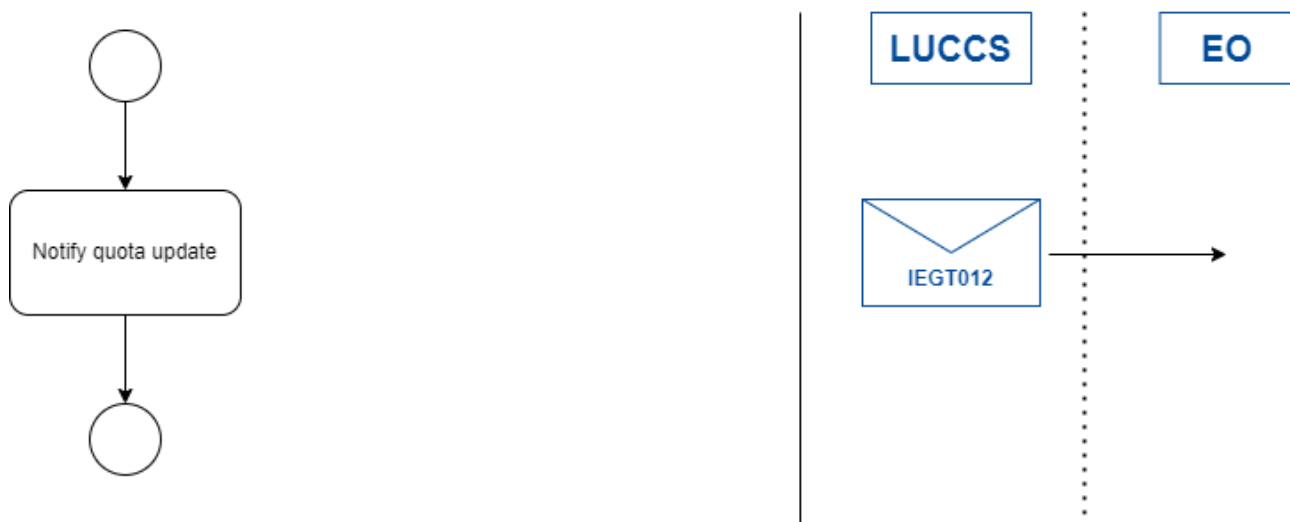


Figure 6: Handle yearly quota – Messages & Flow

Activity	Description	Involved message(s)
Notify quota update	<p>Once the future quotas were approved by the TAXUD officer, the economic operator must be notified about the quota update.</p> <p>The same notification is also sent in case a quota is manually added for the economic operator outside of the yearly quota calculation or if an existing quota is updated by the TAXUD officer.</p>	<p>IEGT012A: Quota Update Notification [LUCCS to EO]</p> <p>This message is issued in case a quota was created for the economic operator or in case an existing quota was modified.</p> <p>The structure of this message is defined in "CCGT012A.xsd".</p>

Table 7: Handle yearly quota – Task descriptions

5.4 TAX SIGN ORDER

The economic operator has the possibility to order tax signs via NTP/B2G.

The same message is used to register different types of tax sign orders. The "Movement request type" in the Tax Sign Order Movement Request message is used to differentiate between the processes. For a standard tax sign order, the code O01 (= Tax sign order) must be used as movement request type. For the tax sign order regularisation process, the code O03 (= Tax sign order regularisation) must be used.

A Tax Sign Order Movement Request message can only reference one movement request type at a time.

5.4.1 TAX SIGN ORDER

This section describes the activities and messages involved in the standard "Tax sign order" process. This process allows the warehousekeeper to perform a tax sign order which will be sent to the printing house once the tax sign order has been approved and completed in the GestTab system.

The activities and message flows are illustrated in Figure 7 whilst Table 8 provides details about each activity.

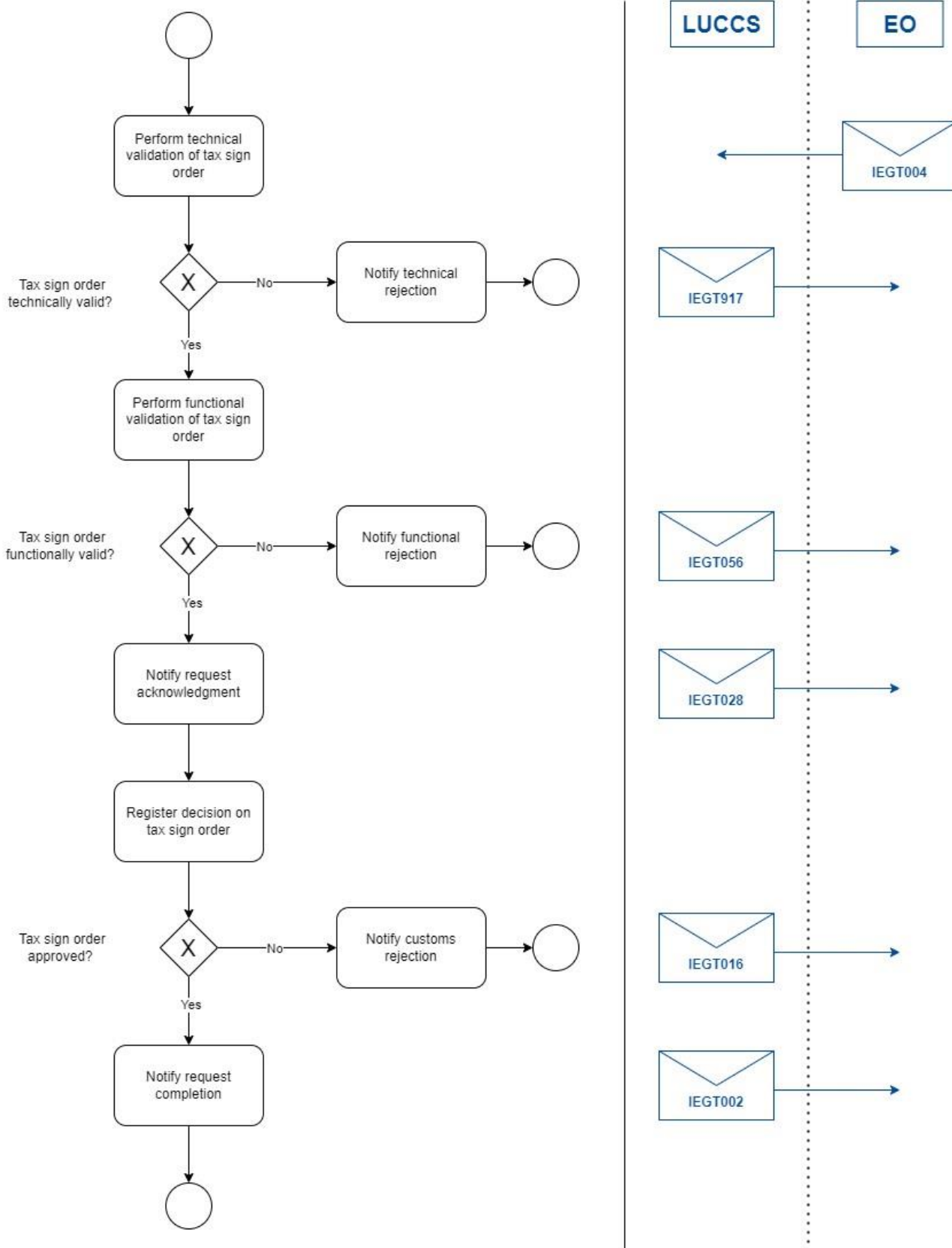


Figure 7: Tax sign order – Messages & Flow



Activity	Description	Involved message(s)
Receive tax sign order request	<p>This activity corresponds to the reception of a Tax Sign Order Movement Request with "Movement request type" = O01.</p> <p>There are two possible outcomes:</p> <ul style="list-style-type: none">• The message is technically and functionally valid: the flow moves on.• The message is technically or functionally invalid: the message is rejected, and the economic operator is notified.	<p>IEGT004: Tax Sign Order Movement Request [EO to LUCCS]</p> <p>This message is submitted by the economic operator to order tax signs.</p> <p>The structure of this message is defined in "CCGT004A.xsd".</p>
Notify technical or functional rejection	<p>If the received tax sign order is technically invalid because the message structure is not respected, a technical rejection message is sent to the EO.</p> <p>If at least one business rule fails for the received tax sign order, a functional rejection message is sent to the EO.</p> <p>These rejection messages contain a correlation identifier corresponding to the message identifier of the tax sign order.</p>	<p>IEGT917: Technical Rejection [LUCCS to EO]</p> <p>This message is issued to inform the economic operator that the received message has been rejected due to a technical error (XSD validation failure).</p> <p>The structure of this message is defined in "CCGT917A.xsd".</p> <p>IEGT056: Functional Rejection [LUCCS to EO]</p> <p>This message is sent to the economic operator to notify him that the received message has been rejected due to a functional reason. The message contains a list of functional errors.</p> <p>The structure of this message is defined in "CCGT056A.xsd".</p>
Notify request acknowledgment	<p>If the received tax sign order is technically and functionally valid, it is registered in the system and the economic operator is notified about the successful reception.</p>	<p>IEGT028A: Request Acknowledgment [LUCCS to EO]</p> <p>This message is sent to the economic operator to indicate that the request has been successfully received.</p> <p>The structure of this message is defined in "CCGT028A.xsd".</p>
Register decision on tax sign order request	<p>In case auto-validation has not been enabled for the warehousekeeper ordering tax signs, a manual decision must be registered by the excise officer.</p> <p>The excise officer can either approve or reject the request.</p> <p>In case auto-validation has been enabled, the request is automatically approved by the system.</p>	N/A

Notify customs rejection	If the tax sign order request is rejected by a customs officer, the economic operator must be informed about the rejection.	IEGT016A: Customs Rejection [LUCCS to EO] This message is issued in case a Tax Sign Order Movement request is rejected by a customs officer. The structure of this message is defined in "CCGT016A.xsd".
Notify request completion	If the tax sign order was approved and successfully processed by the system, the economic operator must be notified about the successful completion of the request. At this stage, the order is also sent to the printing house.	IEGT002A: Request Completion Notification [LUCCS to EO] This notification is issued following the completion of the request to notify the economic operator that the request was successfully processed. The structure of this message is defined in "CCGT002A.xsd".

Table 8: Tax sign order – Task descriptions

5.4.2 TAX SIGN ORDER REGULARISATION

This section describes the activities and messages involved in the "Tax sign order regularisation" process. The regularisation process allows the warehousekeeper to perform a virtual tax sign order which will not be sent to the printing house. Regularisations are only performed in exceptional cases, for instance to regulate the tax sign inventory and tax sign order regularisation requests are always subject to a manual decision by an excise officer.

The message flow is identical to the one for the standard tax sign order visualised in Figure 7. The activities and task descriptions for the tax sign order regularisation process are provided in Table 9.



Activity	Description	Involved message(s)
Receive tax sign order regularisation	<p>This activity corresponds to the reception of a Tax Sign Order Movement Request with "Movement request type" = O03.</p> <p>There are two possible outcomes:</p> <ul style="list-style-type: none">• The message is technically and functionally valid: the flow moves on.• The message is technically or functionally invalid: the message is rejected, and the economic operator is notified.	<p>IEGT004: Tax Sign Order Movement Request [EO to LUCCS]</p> <p>This message is submitted by the economic operator to order tax signs.</p> <p>The structure of this message is defined in "CCGT004A.xsd".</p>
Notify technical or functional rejection	<p>If the received tax sign order regularisation is technically invalid because the message structure is not respected, a technical rejection message is sent to the EO.</p> <p>If at least one business rule fails for the received tax sign order regularisation, a functional rejection message is sent to the EO.</p> <p>These rejection messages contain a correlation identifier corresponding to the message identifier of the tax sign order regularisation.</p>	<p>IEGT917: Technical Rejection [LUCCS to EO]</p> <p>This message is issued to inform the economic operator that the received message has been rejected due to a technical error (XSD validation failure).</p> <p>The structure of this message is defined in "CCGT917A.xsd".</p> <p>IEGT056: Functional Rejection [LUCCS to EO]</p> <p>This message is sent to the economic operator to notify him that the received message has been rejected due to a functional reason. The message contains a list of functional errors.</p> <p>The structure of this message is defined in "CCGT056A.xsd".</p>
Notify request acknowledgment	<p>If the received tax sign order regularisation is technically and functionally valid, it is registered in the system and the economic operator is notified about the successful reception.</p>	<p>IEGT028A: Request Acknowledgment [LUCCS to EO]</p> <p>This message is sent to the economic operator to indicate that the request has been successfully received.</p> <p>The structure of this message is defined in "CCGT028A.xsd".</p>
Register decision on tax sign order regularisation	<p>Contrarily to the standard tax sign orders, no auto-validation is available for tax sign order regularisation.</p> <p>In case a valid tax sign order regularisation request is received a manual decision must be registered by the excise officer.</p> <p>The excise officer can either approve or reject the request.</p>	N/A

Notify customs rejection	If the tax sign order regularisation is rejected by a customs officer, the economic operator must be informed about the rejection.	IEGT016A: Customs Rejection [LUCCS to EO] This message is issued in case a Tax Sign Order Movement request is rejected by a customs officer. The structure of this message is defined in "CCGT016A.xsd".
Notify request completion	If the tax sign order regularisation was approved and successfully processed by the system, the economic operator must be notified about the successful completion of the request. Contrarily to the standard process, the order is not sent to the printing house at this stage.	IEGT002A: Request Completion Notification [LUCCS to EO] This notification is issued following the completion of the request to notify the economic operator that the request was successfully processed. The structure of this message is defined in "CCGT002A.xsd".

Table 9: Tax sign order regularisation – Task descriptions

5.5 WAREHOUSE ENTRY DECLARATION

The economic operator has the possibility to lodge a warehouse entry declaration via NTP/B2G.

The same message is used for the standard "Warehouse entry declaration" process and the regularisation process. The "Movement request type" in the Warehouse Entry Movement Request message is used to differentiate between the two processes. For a standard warehouse entry declaration, the code W01 (= Warehouse entry declaration) must be used as movement request type. For the regularisation process, the code W02 (= Warehouse entry declaration regularisation) must be used.

A Warehouse Entry Movement Request message can only reference one movement request type at a time.

5.5.1 WAREHOUSE ENTRY DECLARATION

This section describes the activities and messages involved in the standard "Warehouse entry declaration" process. The activities and message flows are illustrated in Figure 8 whilst Table 10 provides details about each activity.

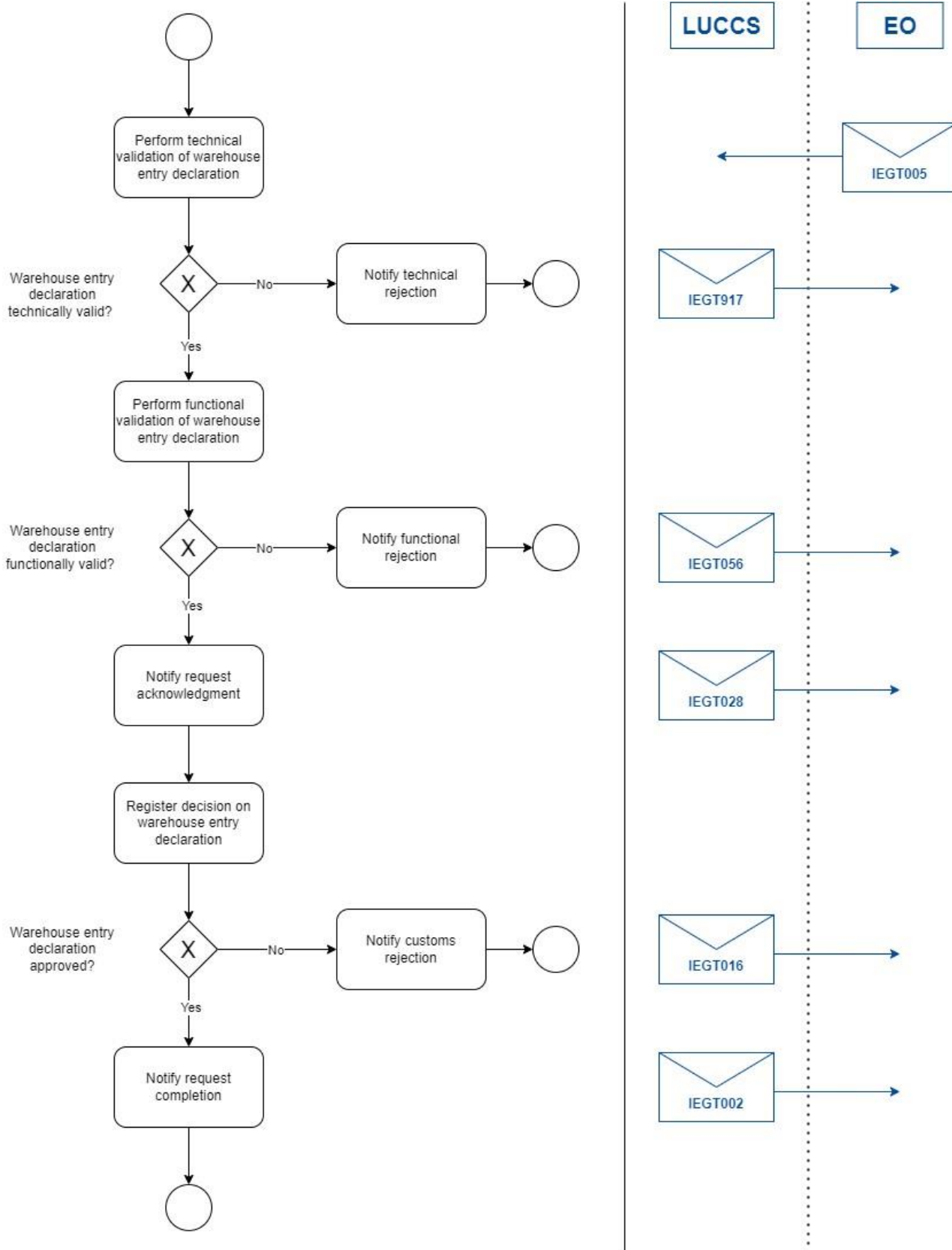


Figure 8: Warehouse entry declaration – Messages & Flow

Activity	Description	Involved message(s)
Receive warehouse entry declaration	<p>This activity corresponds to the reception of the Warehouse Entry Movement Request with "Movement request type" = W01.</p> <p>There are two possible outcomes:</p> <ul style="list-style-type: none"> The message is technically and functionally valid: the flow moves on. The message is technically or functionally invalid: the message is rejected, and the economic operator is notified. 	<p>IEGT005: Warehouse Entry Movement Request [EO to LUCCS]</p> <p>This message is submitted by the economic operator to perform a warehouse entry and use tax signs.</p> <p>The structure of this message is defined in "CCGT005A.xsd".</p>
Notify technical or functional rejection	<p>If the received warehouse entry declaration is technically invalid because the message structure is not respected, a technical rejection message is sent to the EO.</p> <p>If at least one business rule fails for the received warehouse entry declaration, a functional rejection message is sent to the EO.</p> <p>These rejection messages contain a correlation identifier corresponding to the message identifier of the warehouse entry declaration.</p>	<p>IEGT917: Technical Rejection [LUCCS to EO]</p> <p>This message is issued to inform the economic operator that the received message has been rejected due to a technical error (XSD validation failure).</p> <p>The structure of this message is defined in "CCGT917A.xsd".</p> <p>IEGT056: Functional Rejection [LUCCS to EO]</p> <p>This message is sent to the economic operator to notify him that the received message has been rejected due to a functional reason. The message contains a list of functional errors.</p> <p>The structure of this message is defined in "CCGT056A.xsd".</p>
Notify request acknowledgment	<p>If the received warehouse entry declaration is technically and functionally valid, it is registered in the system and the economic operator is notified about the successful reception.</p>	<p>IEGT028A: Request Acknowledgment [LUCCS to EO]</p> <p>This message is sent to the economic operator to indicate that the request has been successfully received.</p> <p>The structure of this message is defined in "CCGT028A.xsd".</p>
Register decision on warehouse entry declaration	<p>In case auto-validation has not been enabled for the warehousekeeper using the tax signs, a manual decision must be registered by the excise officer.</p> <p>The excise officer can either approve or reject the request.</p> <p>In case auto-validation has been enabled, the request is automatically approved by the system.</p>	N/A

Notify customs rejection	If the warehouse entry declaration is rejected by a customs officer, the economic operator must be informed about the rejection.	IEGT016A: Customs Rejection [LUCCS to EO] This message is issued in case a Warehouse Entry Movement request is rejected by a customs officer. The structure of this message is defined in "CCGT016A.xsd".
Notify request completion	If the warehouse entry declaration was approved and successfully processed by the system, the economic operator must be notified about the successful completion of the request.	IEGT002A: Request Completion Notification [LUCCS to EO] This notification is issued following the completion of the request to notify the economic operator that the request was successfully processed. The structure of this message is defined in "CCGT002A.xsd".

Table 10: Warehouse entry declaration – Task descriptions

5.5.2 WAREHOUSE ENTRY DECLARATION REGULARISATION

This section describes the activities and messages involved in the "Warehouse entry declaration regularisation" process. The regularisation process allows the warehousekeeper to perform a virtual warehouse entry declaration which is only performed in exceptional cases, for instance to regulate the tax sign inventory. Warehouse entry regularisation requests are always subject to a manual decision by an excise officer.

The message flow is identical to the one for the standard warehouse entry visualised in Figure 8. The activities and task descriptions for the warehouse entry regularisation process are provided in Table 11.



Activity	Description	Involved message(s)
Receive warehouse entry declaration regularisation	<p>This activity corresponds to the reception of the Warehouse Entry Movement Request with "Movement request type" = W02.</p> <p>There are two possible outcomes:</p> <ul style="list-style-type: none">• The message is technically and functionally valid: the flow moves on.• The message is technically or functionally invalid: the message is rejected, and the economic operator is notified.	<p>IEGT005: Warehouse Entry Movement Request [EO to LUCCS]</p> <p>This message is submitted by the economic operator to perform a warehouse entry and use tax signs.</p> <p>The structure of this message is defined in "CCGT005A.xsd".</p>
Notify technical or functional rejection	<p>If the received warehouse entry declaration regularisation is technically invalid because the message structure is not respected, a technical rejection message is sent to the EO.</p> <p>If at least one business rule fails for the received warehouse entry declaration regularisation, a functional rejection message is sent to the EO.</p> <p>These rejection messages contain a correlation identifier corresponding to the message identifier of the warehouse entry declaration regularisation.</p>	<p>IEGT917: Technical Rejection [LUCCS to EO]</p> <p>This message is issued to inform the economic operator that the received message has been rejected due to a technical error (XSD validation failure).</p> <p>The structure of this message is defined in "CCGT917A.xsd".</p> <p>IEGT056: Functional Rejection [LUCCS to EO]</p> <p>This message is sent to the economic operator to notify him that the received message has been rejected due to a functional reason. The message contains a list of functional errors.</p> <p>The structure of this message is defined in "CCGT056A.xsd".</p>
Notify request acknowledgment	<p>If the received warehouse entry declaration regularisation is technically and functionally valid, it is registered in the system and the economic operator is notified about the successful reception.</p>	<p>IEGT028A: Request Acknowledgment [LUCCS to EO]</p> <p>This message is sent to the economic operator to indicate that the request has been successfully received.</p> <p>The structure of this message is defined in "CCGT028A.xsd".</p>
Register decision on warehouse entry declaration regularisation	<p>Contrarily to the standard warehouse entry declaration, no auto-validation is available for warehouse entry declaration regularisations.</p> <p>In case a valid warehouse entry declaration regularisation request is received a manual decision must be registered by the excise officer.</p>	N/A

	The excise officer can either approve or reject the request.	
Notify customs rejection	If the warehouse entry declaration regularisation is rejected by a customs officer, the economic operator must be informed about the rejection.	IEGT016A: Customs Rejection [LUCCS to EO] This message is issued in case a Customs Warehouse Entry Movement request is rejected by a customs officer. The structure of this message is defined in "CCGT016A.xsd".
Notify request completion	If the warehouse entry declaration regularisation was approved and successfully processed by the system, the economic operator must be notified about the successful completion of the request.	IEGT002A: Request Completion Notification [LUCCS to EO] This notification is issued following the completion of the request to notify the economic operator that the request was successfully processed. The structure of this message is defined in "CCGT002A.xsd".

Table 11: Warehouse entry declaration regularisation – Task descriptions

5.6 DAILY EXIT & DECLARATION OF CONSUMPTION

The economic operator has the possibility to submit a daily exit report or an AC4 declaration via NTP/B2G.

The same message is used for the "Daily exit" and "AC4" processes. The "Movement request type" in the End Product Exit Movement Request message is used to differentiate between the different processes. For a standard daily exit, the code A03 (= Daily exit) must be used as movement request type while code A04 (= Daily exit amendment) must be used for the daily exit amendment.

For a standard declaration of consumption, the code A01 (=AC4) must be used whilst code A02 (= AC4 regularisation) must be used for the regularisation of the declaration of consumption. The End Product Exit Movement Request can only reference one movement request type at a time.

5.6.1 DAILY EXIT

The economic operator has the possibility to request the release of products from the warehouse via daily exit reports, which constitute provisional declarations that can be amended until the weekly AC4 declaration is filled.

This section describes the activities and messages involved in the "Daily exit" process. The activities and message flows are illustrated in Figure 9 whilst Table 12 provides details about each activity.

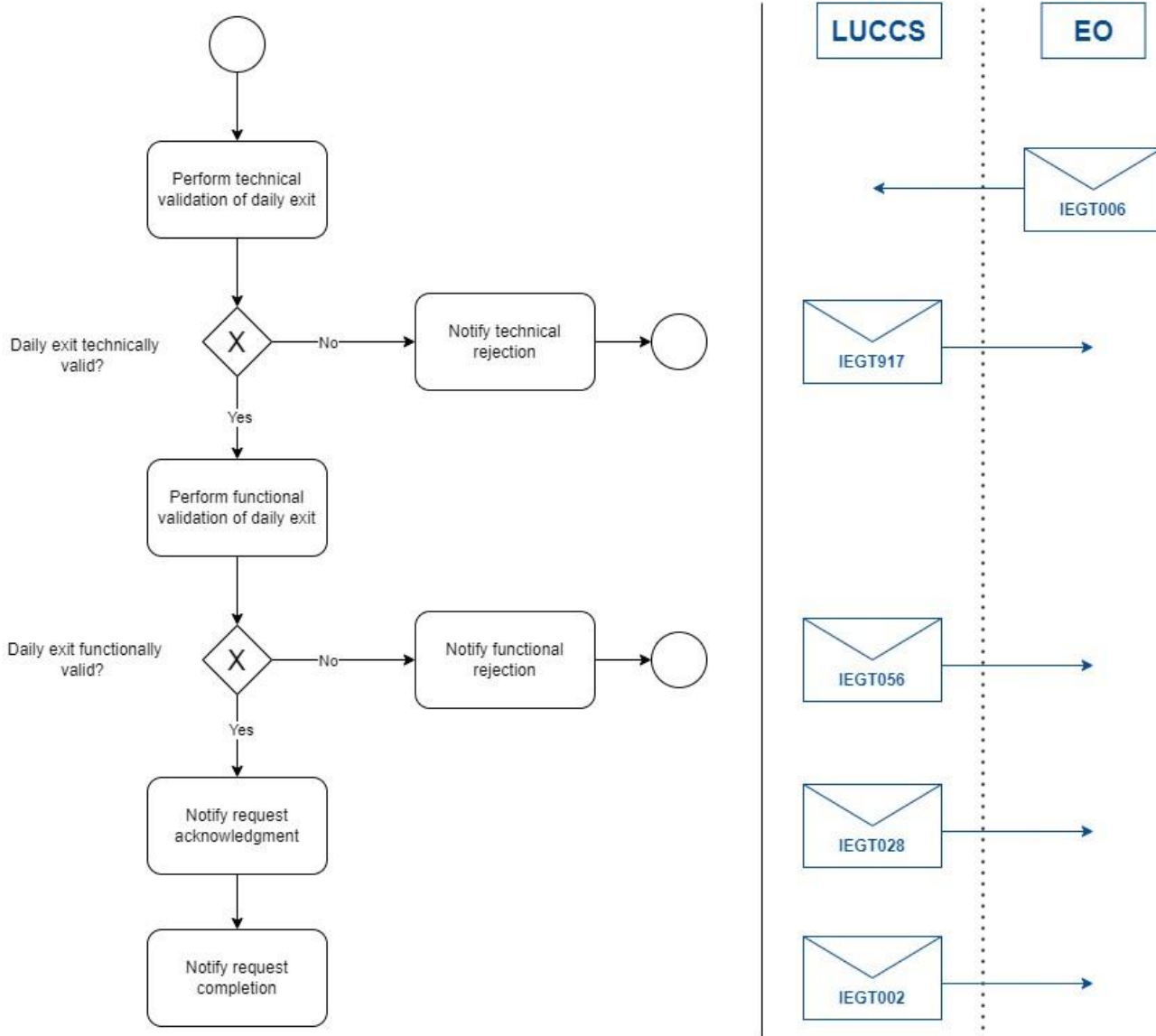


Figure 9: Daily exit – Messages & Flow

Activity	Description	Involved message(s)
Receive daily exit	<p>This activity corresponds to the reception of the End Product Exit Movement Request message with "Movement request type" = A03.</p> <p>There are two possible outcomes:</p> <ul style="list-style-type: none"> The message is technically and functionally valid: the flow moves on. The message is technically or functionally invalid: the message is rejected, and the economic operator is notified. 	<p>IEGT006: End Product Exit Movement Request [EO to LUCCS]</p> <p>This message is submitted by the economic operator to request the release of products from the warehouse.</p> <p>The structure of this message is defined in "CCGT006A.xsd".</p>
Notify technical or functional rejection	<p>If the received daily exit is technically invalid because the message structure is not respected, a technical rejection message is sent to the EO.</p> <p>If at least one business rule fails for the received daily exit, a functional rejection message is sent to the EO.</p> <p>This rejection messages contain a correlation identifier corresponding to the message identifier of the daily exit.</p>	<p>IEGT917: Technical Rejection [LUCCS to EO]</p> <p>This message is issued to inform the economic operator that the received message has been rejected due to a technical error (XSD validation failure).</p> <p>The structure of this message is defined in "CCGT917A.xsd".</p> <p>IEGT056: Functional Rejection [LUCCS to EO]</p> <p>This message is sent to the economic operator to notify him that the received message has been rejected due to a functional reason. The message contains a list of functional errors.</p> <p>The structure of this message is defined in "CCGT056A.xsd".</p>
Notify request acknowledgment	<p>If the received daily exit is technically and functionally valid, it is registered in the system and the economic operator is notified about the successful reception.</p>	<p>IEGT028A: Request Acknowledgment [LUCCS to EO]</p> <p>This message is sent to the economic operator to indicate that the request has been successfully received.</p> <p>The structure of this message is defined in "CCGT028A.xsd".</p>
Notify request completion	<p>The daily exit request is not subject to a manual decision by the excise officer and is automatically approved by the system.</p> <p>If the daily exit was successfully processed by the system, the economic operator must be notified about the successful completion of the request.</p>	<p>IEGT002A: Request Completion Notification [LUCCS to EO]</p> <p>This notification is issued following the completion of the request to notify the economic operator that the request was successfully processed. The structure of this message is defined in "CCGT002A.xsd".</p>

Table 12: Daily exit – Task descriptions



5.6.2 DAILY EXIT AMENDMENT

The economic operator has the possibility to amend a previously submitted daily exit by filling a daily exit amendment. The daily exit report can be amended until the weekly AC4 declaration is filled.

The activities and message flow are identical to the one for the standard daily exit described in the previous section. The only difference is that for daily exit adjustments, the "Movement request type" in the End Product Exit Movement Request message is set to A04 (= Daily exit amendment).

5.6.3 AC4 DECLARATION

All economic operators benefiting from a deferred payment must submit declarations of consumption. By default, a weekly declaration of consumption (AC4) must be filed no later than Thursday of the week following that in which the products were withdrawn from the warehouse (Monday to Sunday). If authorised, the economic operator has the possibility to do a monthly declaration of consumption. Daily exit reports must be covered in chronological order by an AC4 declaration.

This section describes the activities and messages involved in the "AC4 declaration" process. The activities and message flows are illustrated in Figure 10 whilst Table 13 provides details about each activity.

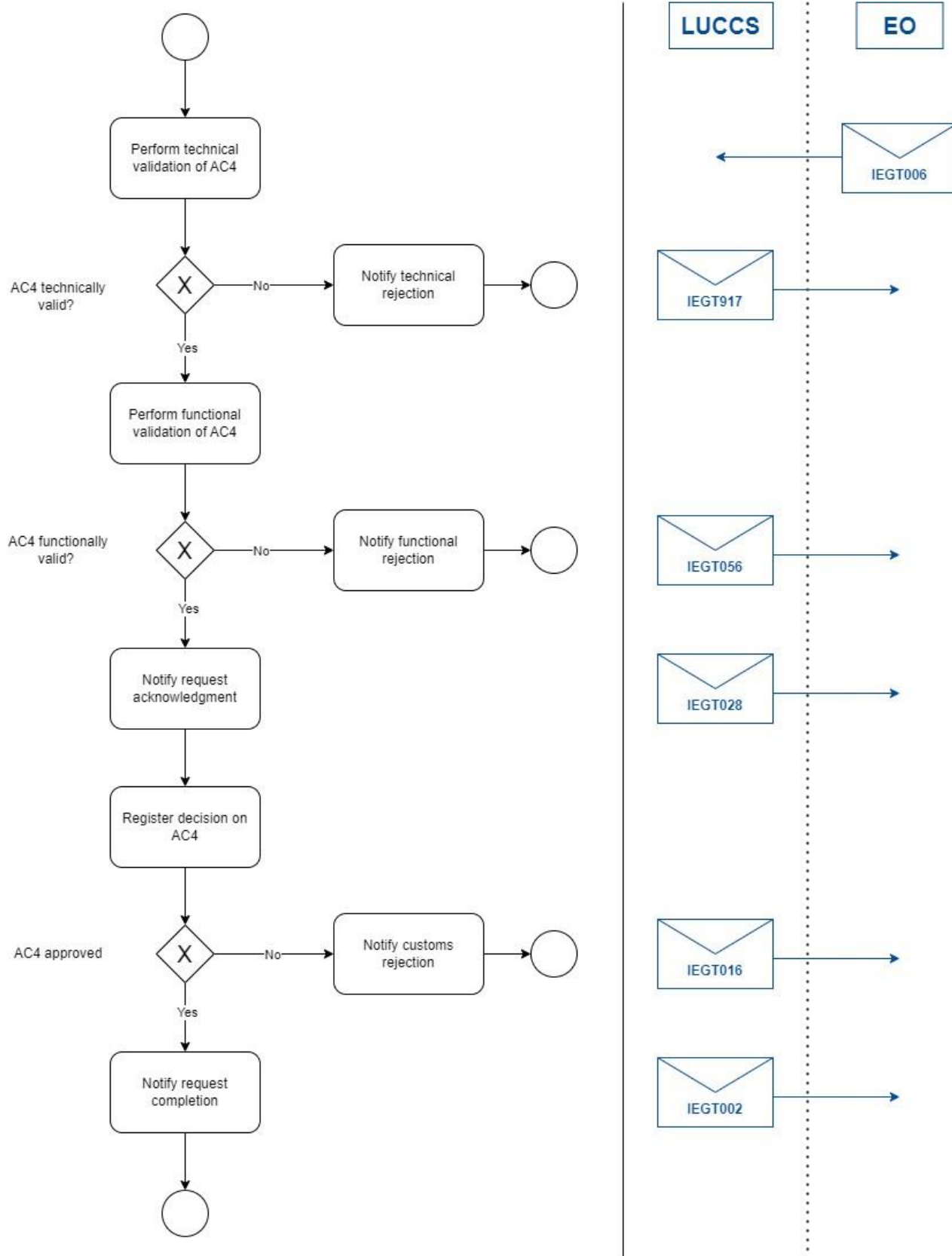


Figure 10: AC4 declaration – Messages & Flow



Activity	Description	Involved message(s)
Receive AC4 declaration	<p>This activity corresponds to the reception of the End Product Exit Movement Request message with "Movement request type" = A01.</p> <p>There are two possible outcomes:</p> <ul style="list-style-type: none">• The message is technically and functionally valid: the flow moves on.• The message is technically or functionally invalid: the message is rejected, and the economic operator is notified.	<p>IEGT006: End Product Exit Movement Request [EO to LUCCS]</p> <p>This message is submitted by the economic operator to request the release of products from the warehouse.</p> <p>The structure of this message is defined in "CCGT006A.xsd".</p>
Notify technical or functional rejection	<p>If the AC4 declaration is technically invalid because the message structure is not respected, a technical rejection message is sent to the EO.</p> <p>If at least one business rule fails for the received AC4 declaration, a functional rejection message is sent to the EO.</p> <p>These rejection messages contain a correlation identifier corresponding to the message identifier of the AC4 declaration.</p>	<p>IEGT917: Technical Rejection [LUCCS to EO]</p> <p>This message is issued to inform the economic operator that the received message has been rejected due to a technical error (XSD validation failure).</p> <p>The structure of this message is defined in "CCGT917A.xsd".</p> <p>IEGT056: Functional Rejection [LUCCS to EO]</p> <p>This message is sent to the economic operator to notify him that the received message has been rejected due to a functional reason. The message contains a list of functional errors.</p> <p>The structure of this message is defined in "CCGT056A.xsd".</p>
Notify request acknowledgment	<p>If the received AC4 declaration is technically and functionally valid, it is registered in the system and the economic operator is notified about the successful reception.</p>	<p>IEGT028A: Request Acknowledgment [LUCCS to EO]</p> <p>This message is sent to the economic operator to indicate that the request has been successfully received.</p> <p>The structure of this message is defined in "CCGT028A.xsd".</p>
Register decision on AC4 declaration	<p>In case auto-validation has not been enabled for the warehousekeeper filling the AC4 declaration, or if daily exits included in the AC4 declaration have been amended, a manual decision must be registered by the excise officer.</p> <p>The excise officer can either approve or reject the request.</p>	N/A

	In case auto-validation has been enabled and no daily exits have been amended, the request is automatically approved by the system.	
Notify customs rejection	If the AC4 declaration is rejected by a customs officer, the economic operator must be informed about the rejection.	IEGT016A: Customs Rejection [LUCCS to EO] This message is issued in case an AC4 Movement request is rejected by a customs officer. The structure of this message is defined in "CCGT016A.xsd".
Notify request completion	If the AC4 declaration was approved and successfully processed by the system, the economic operator must be notified about the successful completion of the request.	IEGT002A: Request Completion Notification [LUCCS to EO] This notification is issued following the completion of the request to notify the economic operator that the request was successfully processed. The structure of this message is defined in "CCGT002A.xsd".

Table 13: AC declaration – Task descriptions

5.6.4 AC4 DECLARATION REGULARISATION

This section describes the activities and messages involved in the "AC4 declaration regularisation" process. The regularisation process allows the warehousekeeper to perform a virtual AC4 declaration which is only performed in exceptional cases, for instance to regulate the tax sign inventory. Moreover, AC4 regularisation requests are always subject to a manual decision by an excise officer.

Contrarily to the standard AC4 declaration, the AC4 declaration regularisation does not validate daily exit declarations. Instead, AC4 regularisations reference warehouse entry declarations and provide details on the price categories which should be introduced to consumption.

The message flow is identical to the one for the standard AC4 declaration visualised in Figure 10. The activities and task descriptions for the AC4 declaration regularisation process are provided in Table 14.



Activity	Description	Involved message(s)
Receive AC4 declaration regularisation	<p>This activity corresponds to the reception of the End Product Exit Movement Request message with "Movement request type" = A02.</p> <p>There are two possible outcomes:</p> <ul style="list-style-type: none">• The message is technically and functionally valid: the flow moves on.• The message is technically or functionally invalid: the message is rejected, and the economic operator is notified.	<p>IEGT006: End Product Exit Movement Request [EO to LUCCS]</p> <p>This message is submitted by the economic operator to request the release of products from the warehouse.</p> <p>The structure of this message is defined in "CCGT006A.xsd".</p>
Notify technical or functional rejection	<p>If the AC4 declaration regularisation is technically invalid because the message structure is not respected, a technical rejection message is sent to the EO.</p> <p>If at least one business rule fails for the received AC4 declaration regularisation, a functional rejection message is sent to the EO.</p> <p>These rejection messages contain a correlation identifier corresponding to the message identifier of the AC4 declaration regularisation.</p>	<p>IEGT917: Technical Rejection [LUCCS to EO]</p> <p>This message is issued to inform the economic operator that the received message has been rejected due to a technical error (XSD validation failure).</p> <p>The structure of this message is defined in "CCGT917A.xsd".</p> <p>IEGT056: Functional Rejection [LUCCS to EO]</p> <p>This message is sent to the economic operator to notify him that the received message has been rejected due to a functional reason. The message contains a list of functional errors.</p> <p>The structure of this message is defined in "CCGT056A.xsd".</p>
Notify request acknowledgment	<p>If the received AC4 declaration regularisation is technically and functionally valid, it is registered in the system and the economic operator is notified about the successful reception.</p>	<p>IEGT028A: Request Acknowledgment [LUCCS to EO]</p> <p>This message is sent to the economic operator to indicate that the request has been successfully received.</p> <p>The structure of this message is defined in "CCGT028A.xsd".</p>
Register decision on AC4 declaration regularisation	<p>Contrarily to the standard AC4 declaration, no auto-validation is available for AC4 declaration regularisation.</p> <p>In case a valid AC4 declaration regularisation request is received a manual decision must be registered by the excise officer.</p>	N/A

Notify customs rejection	If the AC4 declaration regularisation is rejected by a customs officer, the economic operator must be informed about the rejection.	IEGT016A: Customs Rejection [LUCCS to EO] This message is issued in case an AC4 Movement request is rejected by a customs officer. The structure of this message is defined in "CCGT016A.xsd".
Notify request completion	If the AC4 declaration regularisation was approved and successfully processed by the system, the economic operator must be notified about the successful completion of the request.	IEGT002A: Request Completion Notification [LUCCS to EO] This notification is issued following the completion of the request to notify the economic operator that the request was successfully processed. The structure of this message is defined in "CCGT002A.xsd".

Table 14: AC4 declaration regularisation – Task descriptions

5.7 LODGE DECLARATION OF CONSUMPTION IN/OUT

An account configuration allows the customs officer to determine whether or not an economic operator can must lodge IN/OUT declarations via NTP/B2G, or whether the economic operator is obliged to file IN/OUT declarations to introduce tax signs into consumption. When a valid IN/OUT declaration is filed, both a warehouse entry and an AC4 movement are performed. Economic operators for whom IN/OUT declarations are mandatory cannot file standard warehouse entry and AC4 declarations and must lodge IN/OUT declarations to introduce tax signs into consumption.

The same message is used for the "Lodge declaration of consumption IN/OUT" process as for the "Warehouse entry declaration" process. For the IN/OUT declaration, the code W03 (= IN/OUT declaration) must be used as movement request type.

A Warehouse Entry Movement Request message can only reference one movement request type at a time.

This section describes the activities and messages involved in the "Lodge declaration of consumption IN/OUT" process. The activities and message flows are illustrated in Figure 11 whilst Table 15 provides details about each activity.

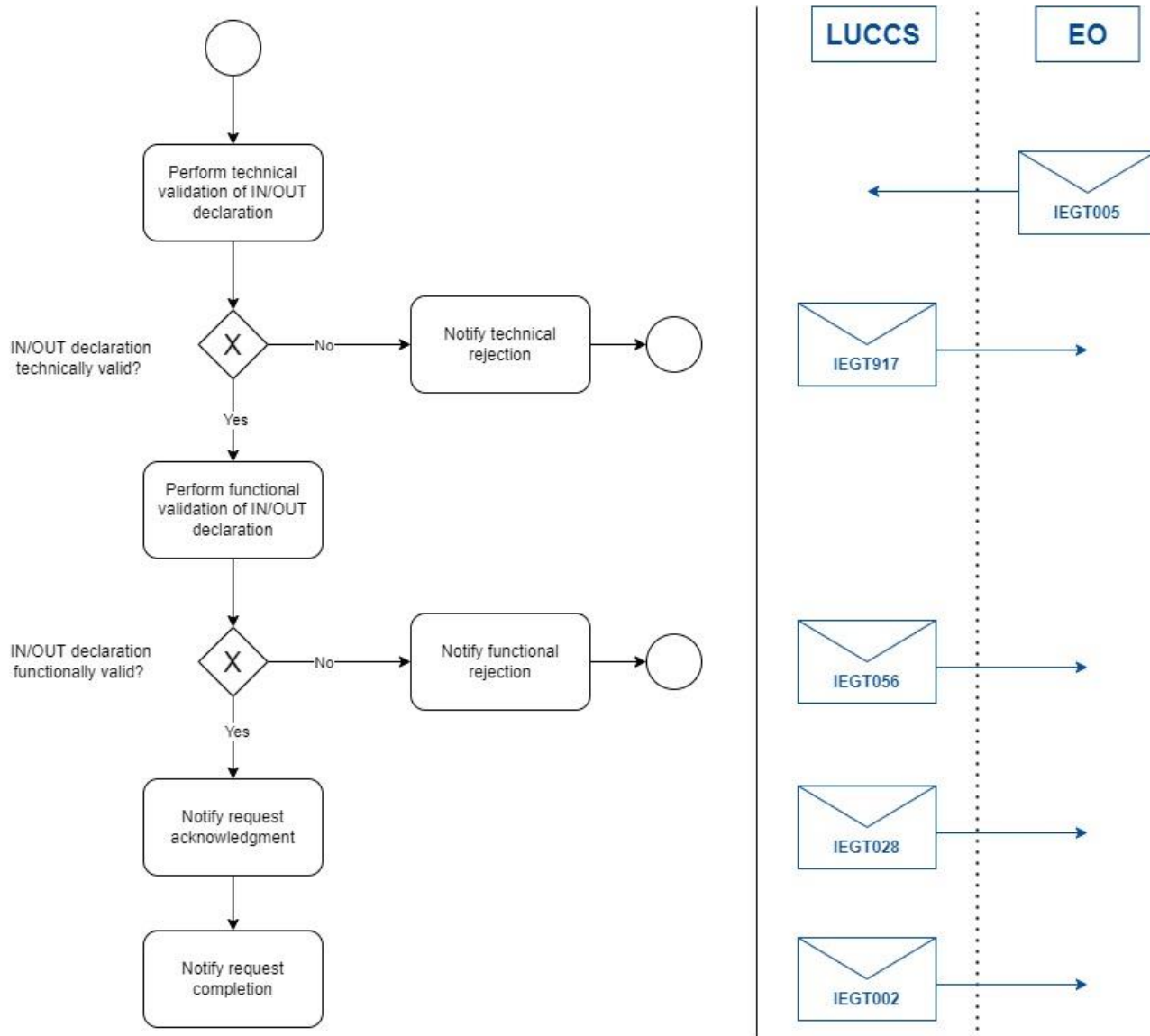


Figure 11: Lodge declaration of consumption IN/OUT – Messages & Flow

Activity	Description	Involved message(s)
Receive IN/OUT declaration	<p>This activity corresponds to the reception of the Warehouse Entry Movement Request with "Movement request type" = W03.</p> <p>There are two possible outcomes:</p> <ul style="list-style-type: none"> The message is technically and functionally valid: the flow moves on. The message is technically or functionally invalid: the message is rejected, and the economic operator is notified. 	<p>IEGT005: Warehouse Entry Movement Request [EO to LUCCS]</p> <p>This message is submitted by the economic operator to perform an IN/OUT declaration and introduce tax signs into consumption.</p> <p>The structure of this message is defined in "CCGT005A.xsd".</p>
Notify technical or functional rejection	<p>If the received IN/OUT declaration is technically invalid because the message structure is not respected, a technical rejection message is sent to the EO.</p> <p>If at least one business rule fails for the received IN/OUT declaration, a functional rejection message is sent to the EO.</p> <p>These rejection messages contain a correlation identifier corresponding to the message identifier of the IN/OUT declaration.</p>	<p>IEGT917: Technical Rejection [LUCCS to EO]</p> <p>This message is issued to inform the economic operator that the received message has been rejected due to a technical error (XSD validation failure).</p> <p>The structure of this message is defined in "CCGT917A.xsd".</p> <p>IEGT056: Functional Rejection [LUCCS to EO]</p> <p>This message is sent to the economic operator to notify him that the received message has been rejected due to a functional reason. The message contains a list of functional errors.</p> <p>The structure of this message is defined in "CCGT056A.xsd".</p>
Notify request acknowledgment	<p>If the received IN/OUT declaration is technically and functionally valid, it is registered in the system and the economic operator is notified about the successful reception.</p>	<p>IEGT028A: Request Acknowledgment [LUCCS to EO]</p> <p>This message is sent to the economic operator to indicate that the request has been successfully received.</p> <p>The structure of this message is defined in "CCGT028A.xsd".</p>
Notify request completion	<p>Once the IN/OUT declaration was successfully processed by the system, the economic operator must be notified about the successful completion of the request.</p> <p>Note that two movements are created for an IN/OUT declaration (warehouse entry and AC4).</p>	<p>IEGT002A: Request Completion Notification [LUCCS to EO]</p> <p>This notification is issued following the completion of the request to notify the economic operator that the request was successfully processed. The structure of this message is defined in "CCGT002A.xsd".</p>

Table 15: Lodge declaration of consumption IN/OUT – Task descriptions



5.8 HANDLE LOSS OF TAX SIGNS

The economic operator has the possibility to declare the loss of unused tax signs via NTP/B2G.

For this purpose, the Lost Tax Signs Request message is used with “Request type” set to L01 (= Declaration of lost tax signs). When a valid lost tax signs request is filed and approved by a customs officer, both a warehouse entry and an AC4 movement are performed.

This section describes the activities and messages involved in the “Handle loss of tax signs” process. The activities and message flows are illustrated in Figure 12 whilst Table 16 provides details about each activity.

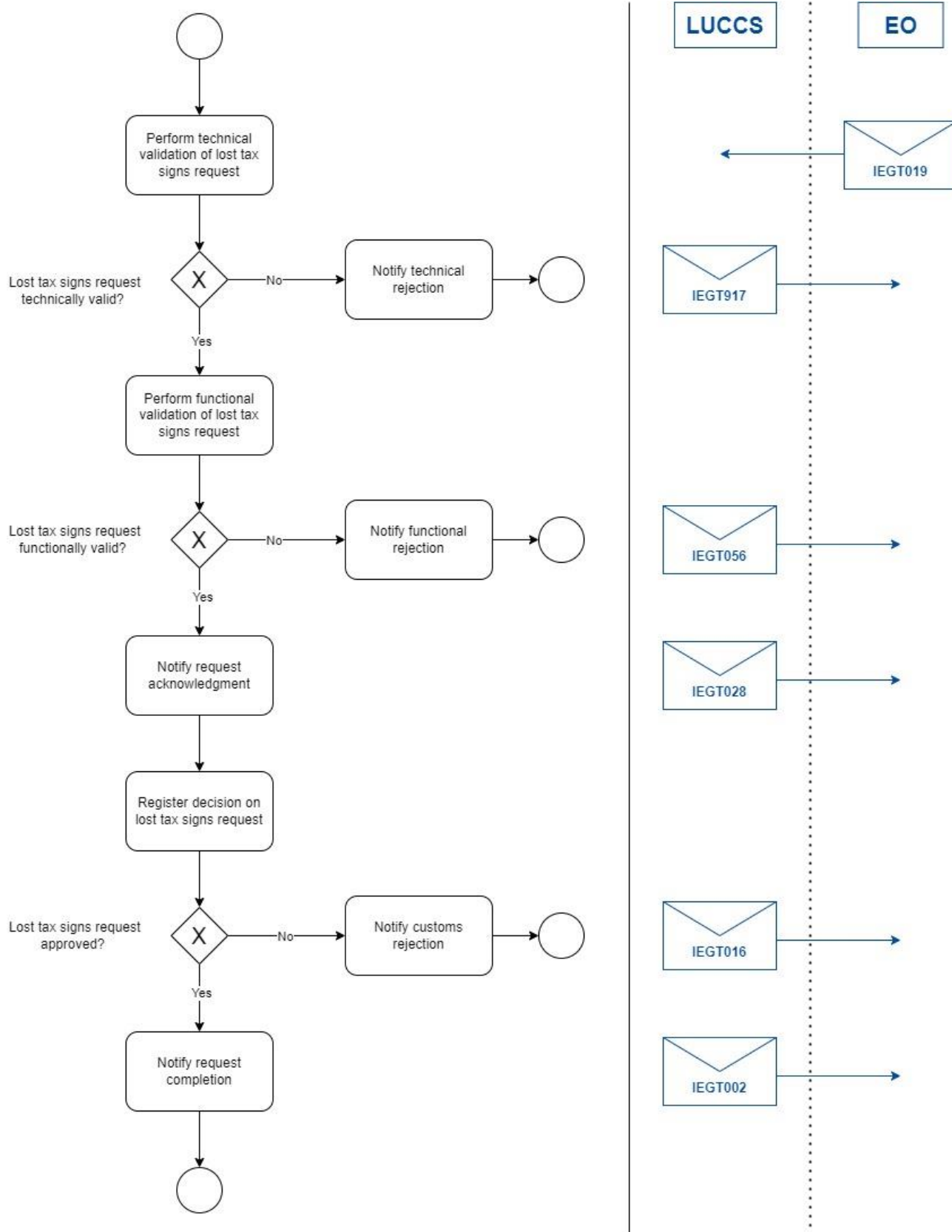


Figure 12: Handle loss of tax signs – Messages & Flow



Activity	Description	Involved message(s)
Receive lost tax signs request	<p>This activity corresponds to the reception of the Lost Tax Signs Request message with "Movement request type" = L01.</p> <p>There are two possible outcomes:</p> <ul style="list-style-type: none">• The message is technically and functionally valid: the flow moves on.• The message is technically or functionally invalid: the message is rejected, and the economic operator is notified.	<p>IEGT019: Lost Tax Signs Request [EO to LUCCS]</p> <p>This message is submitted by the economic operator to handle the loss of unused tax signs.</p> <p>The structure of this message is defined in "CCGT019A.xsd".</p>
Notify technical or functional rejection	<p>If the lost tax signs request is technically invalid because the message structure is not respected, a technical rejection message is sent to the EO.</p> <p>If at least one business rule fails for the received lost tax signs request, a functional rejection message is sent to the EO.</p> <p>These rejection messages contain a correlation identifier corresponding to the message identifier of the lost tax signs request.</p>	<p>IEGT917: Technical Rejection [LUCCS to EO]</p> <p>This message is issued to inform the economic operator that the received message has been rejected due to a technical error (XSD validation failure).</p> <p>The structure of this message is defined in "CCGT917A.xsd".</p> <p>IEGT056: Functional Rejection [LUCCS to EO]</p> <p>This message is sent to the economic operator to notify him that the received message has been rejected due to a functional reason. The message contains a list of functional errors.</p> <p>The structure of this message is defined in "CCGT056A.xsd".</p>
Notify request acknowledgment	<p>If the received lost tax signs request is technically and functionally valid, it is registered in the system and the economic operator is notified about the successful reception.</p>	<p>IEGT028A: Request Acknowledgment [LUCCS to EO]</p> <p>This message is sent to the economic operator to indicate that the request has been successfully received.</p> <p>The structure of this message is defined in "CCGT028A.xsd".</p>
Register decision on lost tax signs	<p>In case a valid lost tax signs request is received a manual decision must be registered by the excise officer.</p> <p>The excise officer can either approve or reject the request.</p> <p>No auto-validation is available for lost tax signs requests.</p>	N/A

Notify customs rejection	If the lost tax signs request is rejected by a customs officer, the economic operator must be informed about the rejection.	IEGT016A: Customs Rejection [LUCCS to EO] This message is issued in case a lost tax signs request is rejected by a customs officer. The structure of this message is defined in "CCGT016A.xsd".
Notify request completion	Once the lost tax signs request was approved and successfully processed by the system, the economic operator must be notified about the successful completion of the request. Note that two movements are created for a lost tax signs request (warehouse entry and AC4).	IEGT002A: Request Completion Notification [LUCCS to EO] This notification is issued following the completion of the request to notify the economic operator that the request was successfully processed. The structure of this message is defined in "CCGT002A.xsd".

Table 16: Handle loss of tax signs – Task descriptions

5.9 EXCISE-FREE TAX SIGN ORDER

The economic operator has the possibility to order excise-free tax signs via NTP/B2G.

For this purpose, the Excise Free Tax Sign Order message is used.

This section describes the activities and messages involved in the "Excise-free tax sign order" process. Once the excise-free tax sign order has been approved and completed in the GestTab system, the order is sent to the printing house.

The activities and message flows are illustrated in Figure 13 whilst Table 17 provides details about each activity.

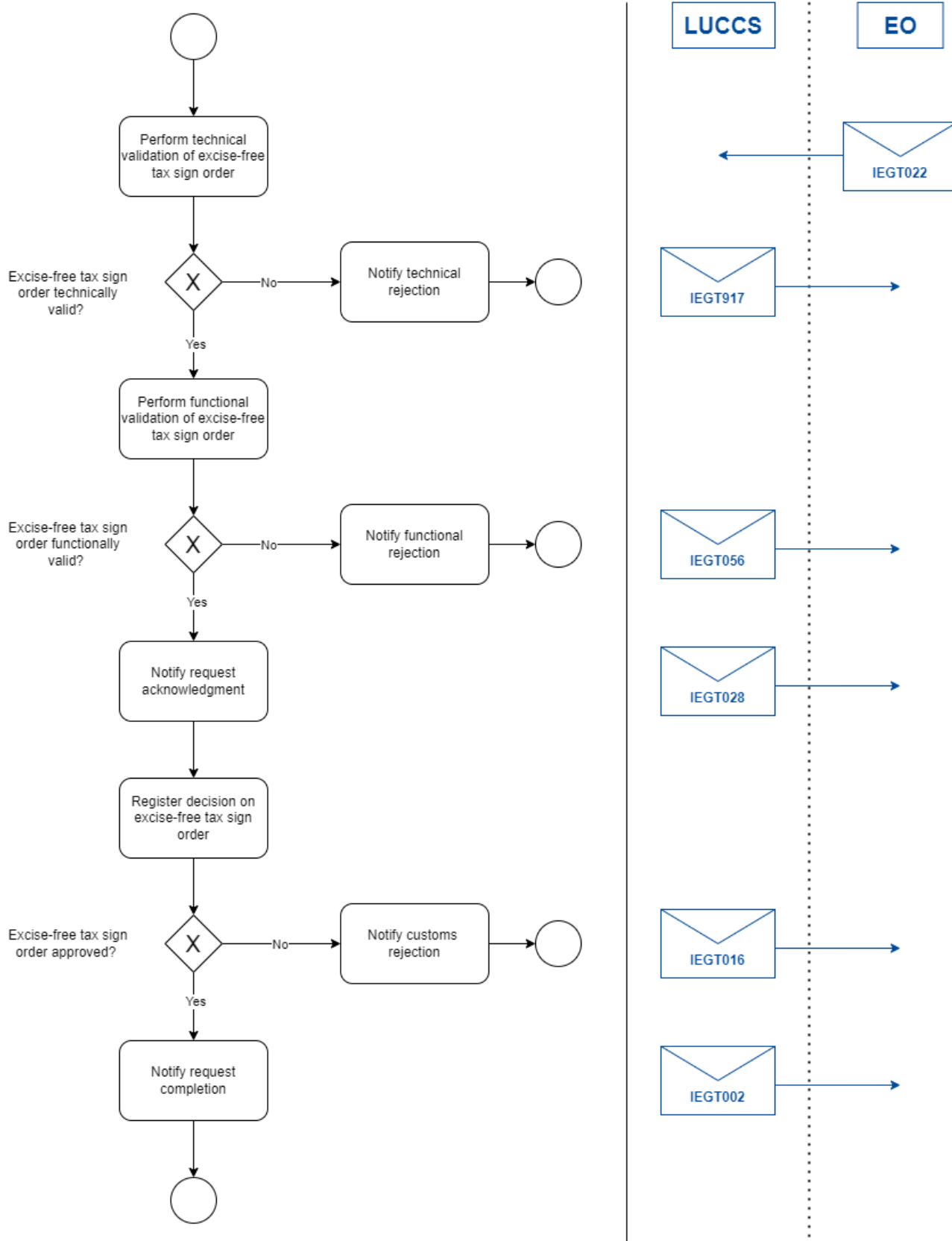


Figure 13: Excise-free tax sign order – Messages & Flow



Activity	Description	Involved message(s)
Receive excise-free tax sign order	<p>This activity corresponds to the reception of the Excise Free Tax Sign Order message with "Movement request type" = E01.</p> <p>There are two possible outcomes:</p> <ul style="list-style-type: none">• The message is technically and functionally valid: the flow moves on.• The message is technically or functionally invalid: the message is rejected, and the economic operator is notified.	<p>IEGT022: Excise Free Tax Sign Order [EO to LUCCS]</p> <p>This message is submitted by the economic operator to handle the loss of unused tax signs.</p> <p>The structure of this message is defined in "CCGT022A.xsd".</p>
Notify technical or functional rejection	<p>If the excise-free tax sign order is technically invalid because the message structure is not respected, a technical rejection message is sent to the EO.</p> <p>If at least one business rule fails for the received excise-free tax sign order, a functional rejection message is sent to the EO.</p> <p>These rejection messages contain a correlation identifier corresponding to the message identifier of the excise-free tax sign order.</p>	<p>IEGT917: Technical Rejection [LUCCS to EO]</p> <p>This message is issued to inform the economic operator that the received message has been rejected due to a technical error (XSD validation failure).</p> <p>The structure of this message is defined in "CCGT917A.xsd".</p> <p>IEGT056: Functional Rejection [LUCCS to EO]</p> <p>This message is sent to the economic operator to notify him that the received message has been rejected due to a functional reason. The message contains a list of functional errors.</p> <p>The structure of this message is defined in "CCGT056A.xsd".</p>
Notify request acknowledgment	<p>If the received excise-free tax sign order is technically and functionally valid, it is registered in the system and the economic operator is notified about the successful reception.</p>	<p>IEGT028A: Request Acknowledgment [LUCCS to EO]</p> <p>This message is sent to the economic operator to indicate that the request has been successfully received.</p> <p>The structure of this message is defined in "CCGT028A.xsd".</p>
Register decision on excise-free tax sign order	<p>In case a valid excise-free tax sign order is received a manual decision must be registered by the excise officer.</p> <p>The excise officer can either approve or reject the request.</p> <p>No auto-validation is available for excise-free tax sign orders.</p>	N/A

Notify customs rejection	If the excise-free tax sign order is rejected by a customs officer, the economic operator must be informed about the rejection.	IEGT016A: Customs Rejection [LUCCS to EO] This message is issued in case a lost tax signs request is rejected by a customs officer. The structure of this message is defined in "CCGT016A.xsd".
Notify request completion	Once the excise-free tax sign order was approved and successfully processed by the system, the economic operator must be notified about the successful completion of the request.	IEGT002A: Request Completion Notification [LUCCS to EO] This notification is issued following the completion of the request to notify the economic operator that the request was successfully processed. The structure of this message is defined in "CCGT002A.xsd".

Table 17: Excise-free tax sign order – Task descriptions

5.10 BULK PRODUCTS

The economic operator has the possibility to request the entry and exit of bulk products via NTP/B2G.

The bulk entry and bulk exit processes are described in section 5.8.1.

The same message is used to perform a "Bulk entry" or a "Bulk exit". The "Movement request type" in the Bulk Movement Request message is used to differentiate between the different processes. For a bulk entry, the code B01 (= Bulk entry declaration) must be used as movement request type while code B02 (= Bulk exit declaration) must be used for a bulk exit.

Furthermore, the economic operator can also request bulk products to be transformed into end products by lodging a warehouse entry declaration from bulk request via NTP/B2G. For this purpose, the economic operator must submit a Warehouse Entry Movement from Bulk Request message. This is described in section 5.8.2.

5.10.1 HANDLE ENTRY & EXIT OF BULK PRODUCTS

This section describes the activities and messages involved in the "Handle entry of bulk products" and "Handle exit of bulk products" processes. The activities and message flows are illustrated in Figure 14 whilst Table 18 provides details about each activity.

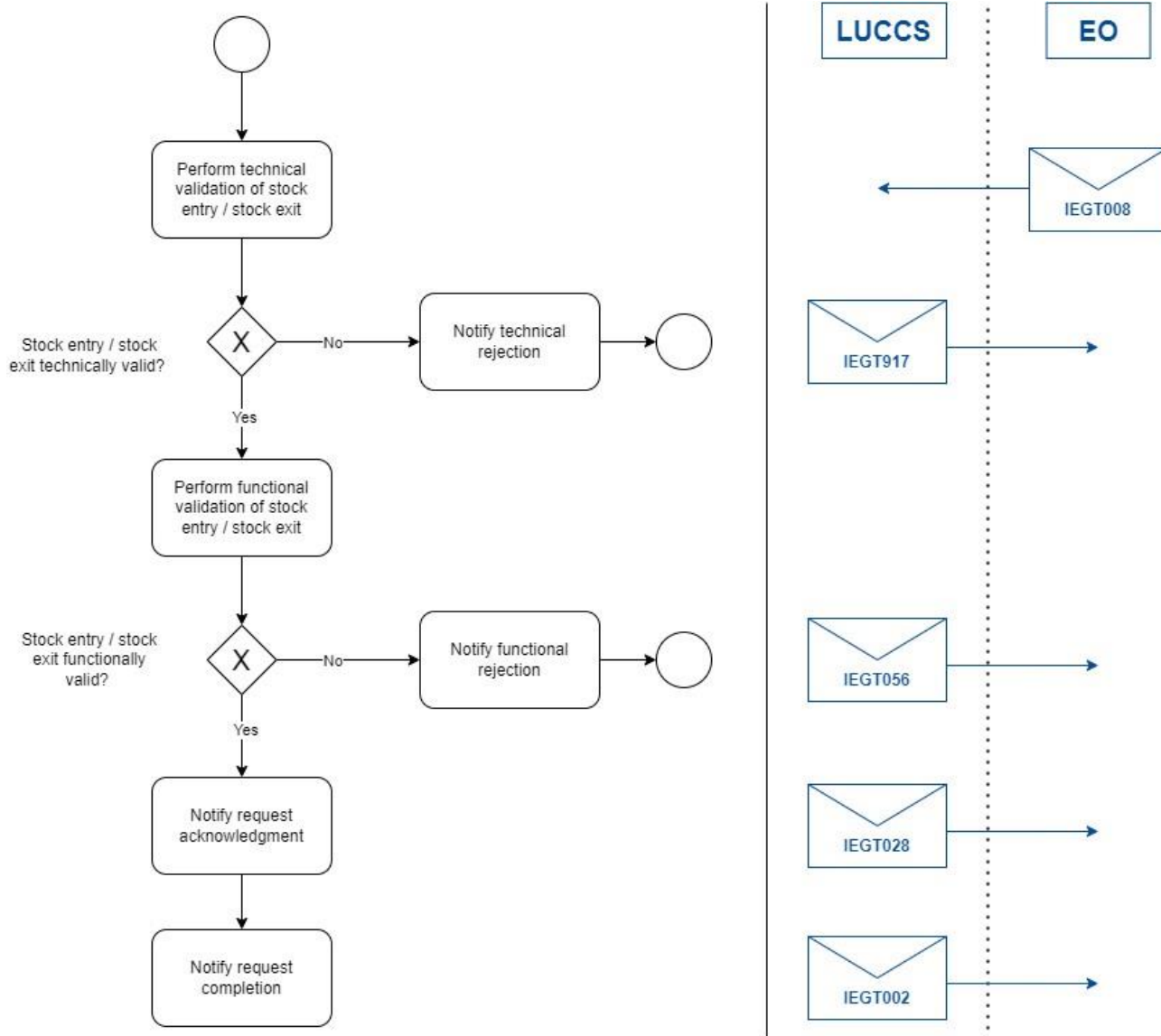


Figure 14: Handle entry & exit of bulk products – Messages & Flow

Activity	Description	Involved message(s)
Receive bulk entry / bulk exit	<p>This activity corresponds to the reception of the Bulk Movement Request message with "Movement request type" = B01 (Bulk entry) or B02 (Bulk exit).</p> <p>There are two possible outcomes:</p> <ul style="list-style-type: none"> The message is technically and functionally valid: the flow moves on. The message is technically or functionally invalid: the message is rejected, and the economic operator is notified. 	<p>IEGT008: Bulk Movement Request [EO to LUCCS]</p> <p>This message is submitted by the economic operator to request the entry or exit of bulk products.</p> <p>The structure of this message is defined in "CCGT008A.xsd".</p>
Notify technical or functional rejection	<p>If the received bulk entry / bulk exit is technically invalid because the message structure is not respected, a technical rejection message is sent to the EO.</p> <p>If at least one business rule fails for the received bulk entry / bulk exit, a functional rejection message is sent to the EO.</p> <p>These rejection messages contain a correlation identifier corresponding to the message identifier of the bulk entry / bulk exit.</p>	<p>IEGT917: Technical Rejection [LUCCS to EO]</p> <p>This message is issued to inform the economic operator that the received message has been rejected due to a technical error (XSD validation failure).</p> <p>The structure of this message is defined in "CCGT917A.xsd".</p> <p>IEGT056: Functional Rejection [LUCCS to EO]</p> <p>This message is sent to the economic operator to notify him that the received message has been rejected due to a functional reason. The message contains a list of functional errors.</p> <p>The structure of this message is defined in "CCGT056A.xsd".</p>
Notify request acknowledgment	<p>If the received bulk entry / bulk exit is technically and functionally valid, it is registered in the system and the economic operator is notified about the successful reception.</p>	<p>IEGT028A: Request Acknowledgment [LUCCS to EO]</p> <p>This message is sent to the economic operator to indicate that the request has been successfully received.</p> <p>The structure of this message is defined in "CCGT028A.xsd".</p>
Notify request completion	<p>No manual decision must be registered regarding the bulk entry / bulk exit declaration. In case the request is technically and functionally valid, it is automatically approved by the system.</p> <p>The EO must be notified about the approval and successful completion of the request.</p>	<p>IEGT002A: Request Completion Notification [LUCCS to EO]</p> <p>This notification is issued following the completion of the request to notify the economic operator that the request was successfully processed. The structure of this message is defined in "CCGT002A.xsd".</p>

Table 18: Handle entry & exit of bulk products – Task descriptions



5.10.2 HANDLE WAREHOUSE ENTRY DECLARATION FROM BULK PRODUCTS

This section describes the activities and messages involved in the “Handle warehouse entry declaration from bulk products” process which allows the warehousekeeper to transform bulk products into end products. Specifically, a bulk exit declaration and a warehouse entry declaration will be completed.

The activities and message flows are illustrated in Figure 15 whilst Table 19 provides details about each activity.

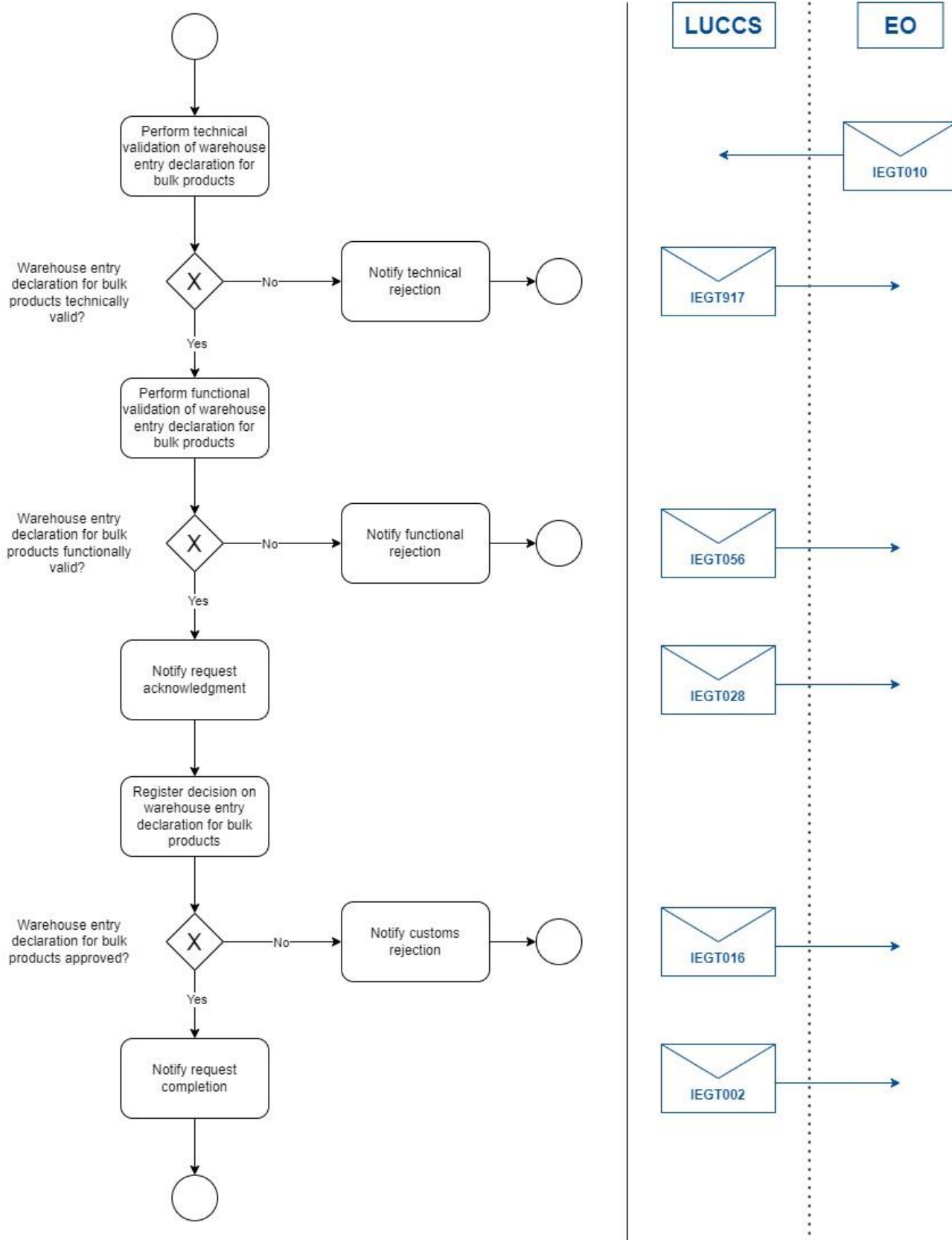


Figure 15: Handle warehouse entry declaration from bulk products – Messages & Flow

Activity	Description	Involved message(s)
Receive warehouse entry declaration from bulk products	<p>This activity corresponds to the reception of the Warehouse Entry Movement from Bulk Request message with "Movement request type" = D01.</p> <p>There are two possible outcomes:</p> <ul style="list-style-type: none"> The message is technically and functionally valid: the flow moves on. The message is technically or functionally invalid: the message is rejected, and the economic operator is notified. 	<p>IEGT010: Warehouse Entry Movement From Bulk Request [EO to LUCCS]</p> <p>This message is submitted by the economic operator to request the release of products from the warehouse.</p> <p>The structure of this message is defined in "CCGT010A.xsd".</p>
Notify technical or functional rejection	<p>If the warehouse entry declaration from bulk products is technically invalid because the message structure is not respected, a technical rejection message is sent to the EO.</p> <p>If at least one business rule fails for the received warehouse entry declaration from bulk products, a functional rejection message is sent to the EO.</p> <p>These rejection messages contain a correlation identifier corresponding to the message identifier of the warehouse entry declaration for bulk products.</p>	<p>IEGT917: Technical Rejection [LUCCS to EO]</p> <p>This message is issued to inform the economic operator that the received message has been rejected due to a technical error (XSD validation failure).</p> <p>The structure of this message is defined in "CCGT917A.xsd".</p> <p>IEGT056: Functional Rejection [LUCCS to EO]</p> <p>This message is sent to the economic operator to notify him that the received message has been rejected due to a functional reason. The message contains a list of functional errors.</p> <p>The structure of this message is defined in "CCGT056A.xsd".</p>
Notify request acknowledgment	<p>If the received warehouse entry declaration from bulk products is technically and functionally valid, it is registered in the system and the economic operator is notified about the successful reception.</p>	<p>IEGT028A: Request Acknowledgment [LUCCS to EO]</p> <p>This message is sent to the economic operator to indicate that the request has been successfully received.</p> <p>The structure of this message is defined in "CCGT028A.xsd".</p>
Register decision on warehouse entry declaration from bulk products	<p>In case warehouse entry auto-validation has not been enabled for the warehousekeeper, a manual decision must be registered by the excise officer.</p> <p>The excise officer can either approve or reject the request.</p> <p>In case auto-validation has been enabled, the request is automatically approved by the system.</p>	N/A

Notify customs rejection	If the warehouse entry declaration from bulk products is rejected by a customs officer, the economic operator must be informed about the rejection.	IEGT016A: Customs Rejection [LUCCS to EO] This message is issued in case a warehouse entry declaration for bulk products is rejected by a customs officer. The structure of this message is defined in "CCGT016A.xsd".
Notify request completion	Once the warehouse entry declaration from bulk products was approved and successfully processed by the system, the economic operator must be notified about the successful completion of the request.	IEGT002A: Request Completion Notification [LUCCS to EO] This notification is issued following the completion of the request to notify the economic operator that the request was successfully processed. The structure of this message is defined in "CCGT002A.xsd".

Table 19: Handle warehouse entry declaration from bulk products – Task descriptions

5.11 HANDLE DESTRUCTIONS

The economic operator has the possibility to request the destruction of unused tax signs, used tax signs, tax signs exited via AC4, and bulk products via NTP/B2G.

The same message is used to request the different types of destructions. The "Movement request type" in the Destruction Request message is used to differentiate between the different processes. For a destruction of unused tax signs, the code F01 (=Destruction of unused tax signs) must be used as movement request type while code F02 (= Destruction of used tax signs) must be used for the destruction of used tax signs, and code F03 (=Destruction of bulk products) is used for the destruction of bulk products. Finally, code F04 (=Destruction of tax signs exited via AC4) is used for the destruction of tax signs that were already introduced into consumption

A Destruction Request message can only reference one movement request type at a time.

This section describes the activities and messages involved in the "Destruction" process. The activities and message flows are illustrated in Figure 16 whilst Table 20 provides details about each activity.

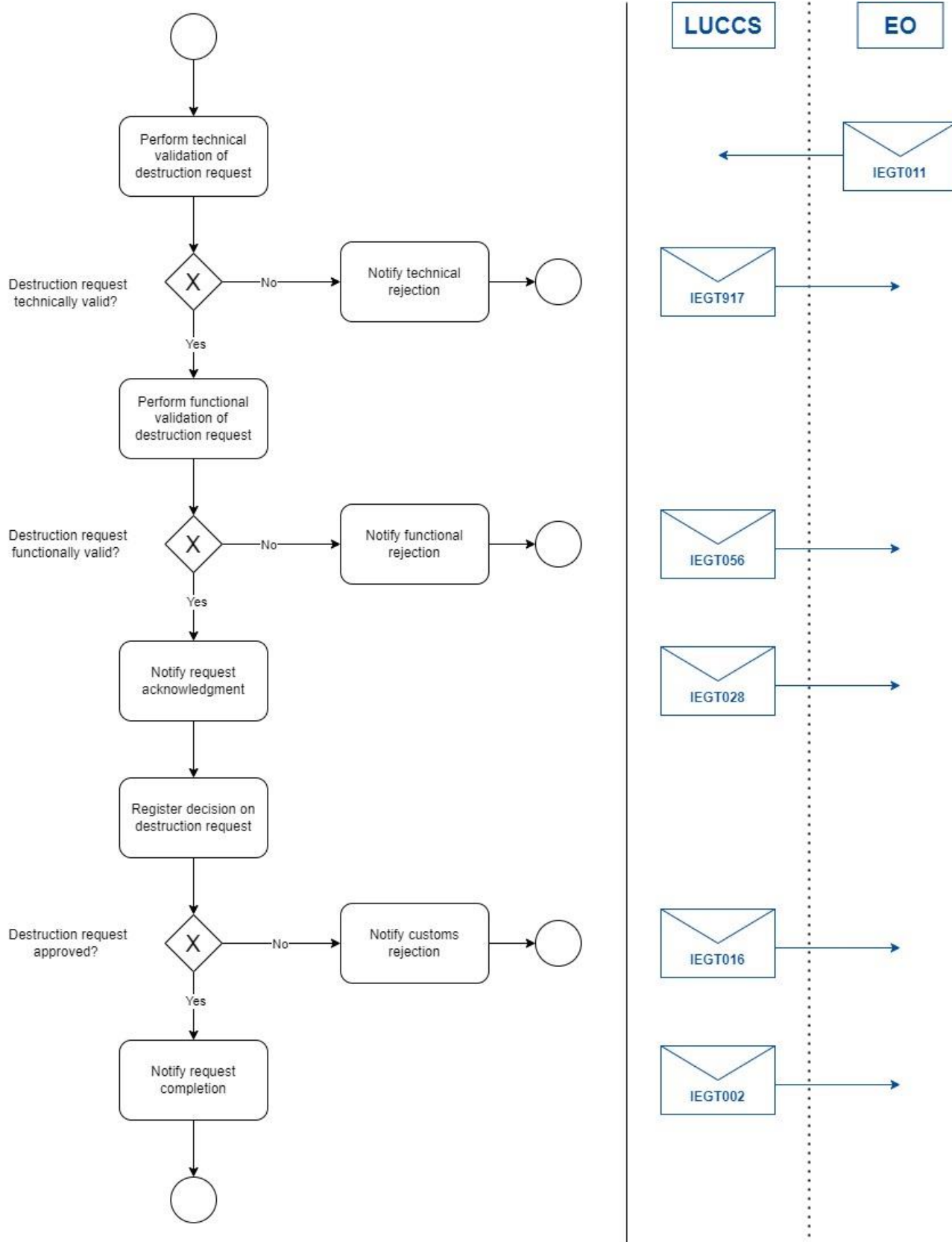


Figure 16: Handle destruction – Messages & Flow



Activity	Description	Involved message(s)
Receive destruction request	<p>This activity corresponds to the reception of the Destruction Request message with "Movement request type" = F01, F02, F03, or F04.</p> <p>There are two possible outcomes:</p> <ul style="list-style-type: none">• The message is technically and functionally valid: the flow moves on.• The message is technically or functionally invalid: the message is rejected, and the economic operator is notified.	<p>IEGT011: Destruction Request [EO to LUCCS]</p> <p>This message is submitted by the economic operator to request a destruction.</p> <p>The structure of this message is defined in "CCGT011A.xsd".</p>
Notify technical or functional rejection	<p>If the destruction request is technically invalid because the message structure is not respected, a technical rejection message is sent to the EO.</p> <p>If at least one business rule fails for the received destruction request, a functional rejection message is sent to the EO.</p> <p>These rejection messages contain a correlation identifier corresponding to the message identifier of the destruction request.</p>	<p>IEGT917: Technical Rejection [LUCCS to EO]</p> <p>This message is issued to inform the economic operator that the received message has been rejected due to a technical error (XSD validation failure).</p> <p>The structure of this message is defined in "CCGT917A.xsd".</p> <p>IEGT056: Functional Rejection [LUCCS to EO]</p> <p>This message is sent to the economic operator to notify him that the received message has been rejected due to a functional reason. The message contains a list of functional errors.</p> <p>The structure of this message is defined in "CCGT056A.xsd".</p>
Notify request acknowledgment	<p>If the received destruction request is technically and functionally valid, it is registered in the system and the economic operator is notified about the successful reception.</p>	<p>IEGT028A: Request Acknowledgment [LUCCS to EO]</p> <p>This message is sent to the economic operator to indicate that the request has been successfully received.</p> <p>The structure of this message is defined in "CCGT028A.xsd".</p>
Register decision on destruction request	<p>In case a valid destruction request is received a manual decision must be registered by the excise officer.</p> <p>The excise officer can either approve or reject the request.</p> <p>No auto-validation is available for destruction requests.</p>	N/A

Notify customs rejection	If the destruction request is rejected by a customs officer, the economic operator must be informed about the rejection.	IEGT016A: Customs Rejection [LUCCS to EO] This message is issued in case a destruction request is rejected by a customs officer. The structure of this message is defined in "CCGT016A.xsd".
Notify request completion	Once the destruction request is approved, the destruction report is completed and successfully processed by the system, the economic operator must be notified about the successful completion of the request.	IEGT002A: Request Completion Notification [LUCCS to EO] This notification is issued following the completion of the request to notify the economic operator that the request was successfully processed. The structure of this message is defined in "CCGT002A.xsd".

Table 20: Handle destruction – Task descriptions

5.12 INVALIDATIONS

The economic operator has the possibility to request the invalidation of a declaration via NTP/B2G.

The same message is used to request the invalidation of the different types of declarations. The "Movement request type" in the Invalidation Request message is used to differentiate between the different processes. An Invalidation Request message can only reference one movement request type at a time.

For the invalidation of warehouse entry declarations, the code I02 (= Invalidation of warehouse entry declaration) must be used while the code I03 (=Invalidation of AC4) is used for the invalidation of AC4 declarations. The codes I04 (=Invalidation of bulk entry declaration) and I05 (=Invalidation of bulk exit declaration) are used to invalidate bulk entry and bulk exit declarations respectively. Lastly, code I06 (=Invalidation of IN/OUT declaration) is used for the invalidation of IN/OUT declarations. In this case, both the warehouse entry and the AC4 declaration are invalidated simultaneously.

The invalidation of IN/OUT declarations is the only scenario (= sequence of movements done via a single request) which is handled by the system because a warehousekeeper might be obliged to lodge IN/OUT declarations and will thus not be able to perform a warehouse entry or AC4 declaration separately. For all other scenarios (i.e. declaration of lost tax signs, warehouse entry from bulk declaration, or AC4 for samples declaration), the invalidation of each associated movement must be requested separately.

Finally, note that the invalidation of tax sign orders cannot be requested via NTP/B2G. Tax sign orders can only be invalidated by the excise officer because once a tax sign order has been approved, an order is sent to the printing house and this printing request will have to be cancelled as well.



This section describes the activities and messages involved in the “Invalidation” process. The activities and message flows are illustrated in Figure 17 whilst Table 21 provides details about each activity.

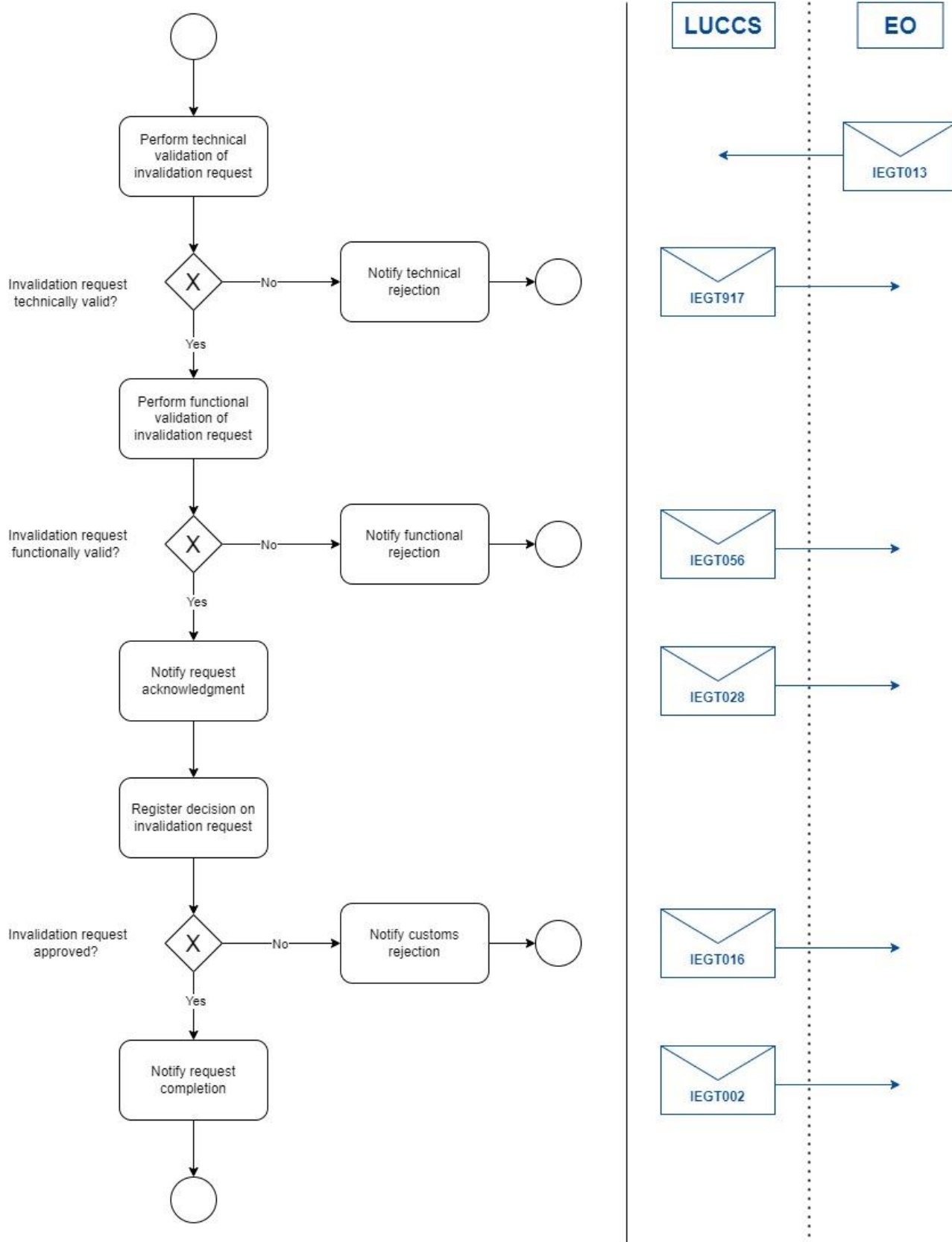


Figure 17: Invalidations – Messages & Flow



Activity	Description	Involved message(s)
Receive invalidation request	<p>This activity corresponds to the reception of the Invalidation Request message with "Movement request type" = I02, I03, I04, I05, or I06.</p> <p>There are two possible outcomes:</p> <ul style="list-style-type: none">• The message is technically and functionally valid: the flow moves on.• The message is technically or functionally invalid: the message is rejected, and the economic operator is notified.	<p>IEGT013: Invalidation Request [EO to LUCCS]</p> <p>This message is submitted by the economic operator to request an invalidation.</p> <p>The structure of this message is defined in "CCGT013A.xsd".</p>
Notify technical or functional rejection	<p>If the invalidation request is technically invalid because the message structure is not respected, a technical rejection message is sent to the EO.</p> <p>If at least one business rule fails for the received invalidation request, a functional rejection message is sent to the EO.</p> <p>These rejection messages contain a correlation identifier corresponding to the message identifier of the invalidation request.</p>	<p>IEGT917: Technical Rejection [LUCCS to EO]</p> <p>This message is issued to inform the economic operator that the received message has been rejected due to a technical error (XSD validation failure).</p> <p>The structure of this message is defined in "CCGT917A.xsd".</p> <p>IEGT056: Functional Rejection [LUCCS to EO]</p> <p>This message is sent to the economic operator to notify him that the received message has been rejected due to a functional reason. The message contains a list of functional errors.</p> <p>The structure of this message is defined in "CCGT056A.xsd".</p>
Notify request acknowledgment	<p>If the received invalidation request is technically and functionally valid, it is registered in the system and the economic operator is notified about the successful reception.</p>	<p>IEGT028A: Request Acknowledgment [LUCCS to EO]</p> <p>This message is sent to the economic operator to indicate that the request has been successfully received.</p> <p>The structure of this message is defined in "CCGT028A.xsd".</p>
Register decision on invalidation request	<p>In case a valid invalidation request is received a manual decision must be registered by the excise officer.</p> <p>The excise officer can either approve or reject the request.</p> <p>No auto-validation is available for invalidation requests.</p>	N/A

Notify customs rejection	If the invalidation request is rejected by a customs officer, the economic operator must be informed about the rejection.	IEGT016A: Customs Rejection [LUCCS to EO] This message is issued in case an invalidation request is rejected by a customs officer. The structure of this message is defined in "CCGT016A.xsd".
Notify request completion	Once the invalidation request was approved and successfully processed by the system, the economic operator must be notified about the successful completion of the request.	IEGT002A: Request Completion Notification [LUCCS to EO] This notification is issued following the completion of the request to notify the economic operator that the request was successfully processed. The structure of this message is defined in "CCGT002A.xsd".

Table 21: Invalidations – Task descriptions

5.13 NOTIFY RIGHT TO REPAYMENT / REMITTANCE

In some cases, the economic operator has the right to a repayment or a remittance. While remittance requests are automatically created by the system, repayments must be requested by the economic operator via NTP.

A remittance is automatically created by the system when an unpaid AC4 or unpaid IN/OUT declaration is invalidated or when tax signs which were introduced to consumption are destroyed and the associated debt was not yet paid.

A repayment can be requested following the destruction of tax signs introduced to consumption for which the debt was already paid or following the annual list of loss calculation.

A Debt Change Notification is sent to the economic operator via NTP/B2G to notify them about the remittance request creation or inform them that a repayment can be requested. Figure 18 and Table 22 provide details about the message flow.

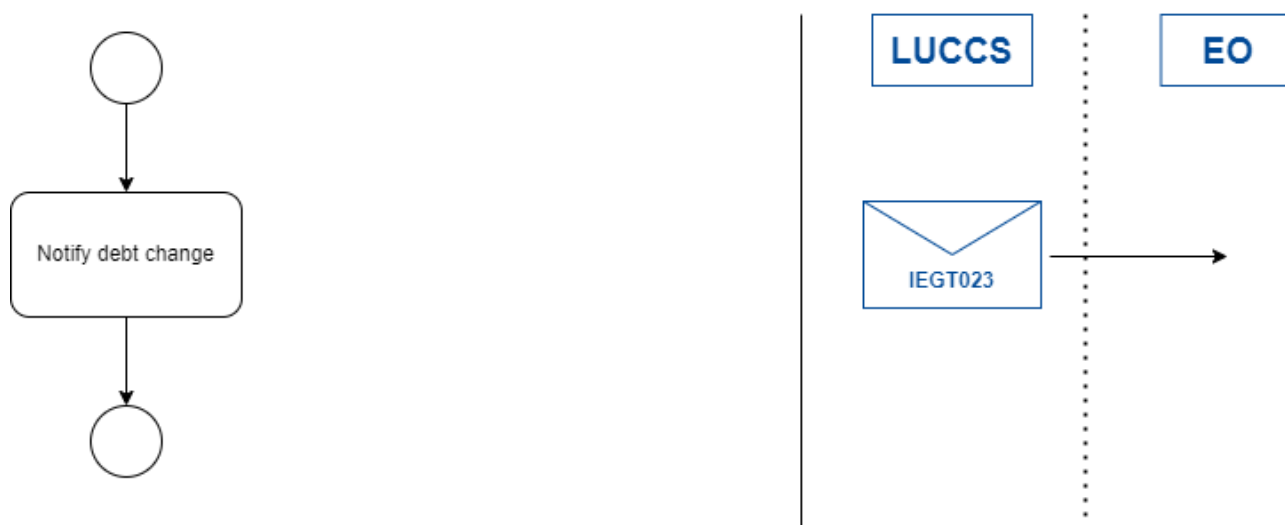


Figure 18: Notify debt change – Messages & Flow

Activity	Description	Involved message(s)
Notify debt change	This activity corresponds to the sending of the Debt Change Notification message.	IEGT023: Debt Change Notification [LUCCS to EO] This message is issued to inform the economic operator that a remittance request has been created or that a repayment request can be made. The structure of this message is defined in "CCGT023A.xsd".

Table 22: Notify debt change – Task descriptions

5.14 NOTIFY INVALIDATION OR EXPIRY OF TAX SIGNS

All tax signs have a validity duration which is determined by the TAXUD meaning that tax signs will expire after a certain time. The validity period starts once the tax sign order is approved in the system and the tax signs are effectively ordered.

In addition, tax signs can become invalidated due to tax structure updates. If the tax structure of a product category is updated and the new tax structure no longer includes a price category present in the previous tax structure, then the price category becomes invalidated.

When tax signs are approaching their validity end date or will be invalidated once the new tax structure becomes applicable, the authorised warehousekeeper must be notified. By default, a notification notifying the future expiry of the tax signs is sent 30 days before the tax signs expire (this is configurable) and another

notification is sent once the tax signs have expired indicating the expiry of the tax signs. The future invalidation of price categories is notified as soon as the new tax structure is planned.

To notify the warehousekeeper of the expiry or future expiry of tax signs, a Notify Warehousekeeper Tax Sign Update notification is sent to the economic operator via NTP/B2G. Figure 19 and Table 23 provide details about the message flow.

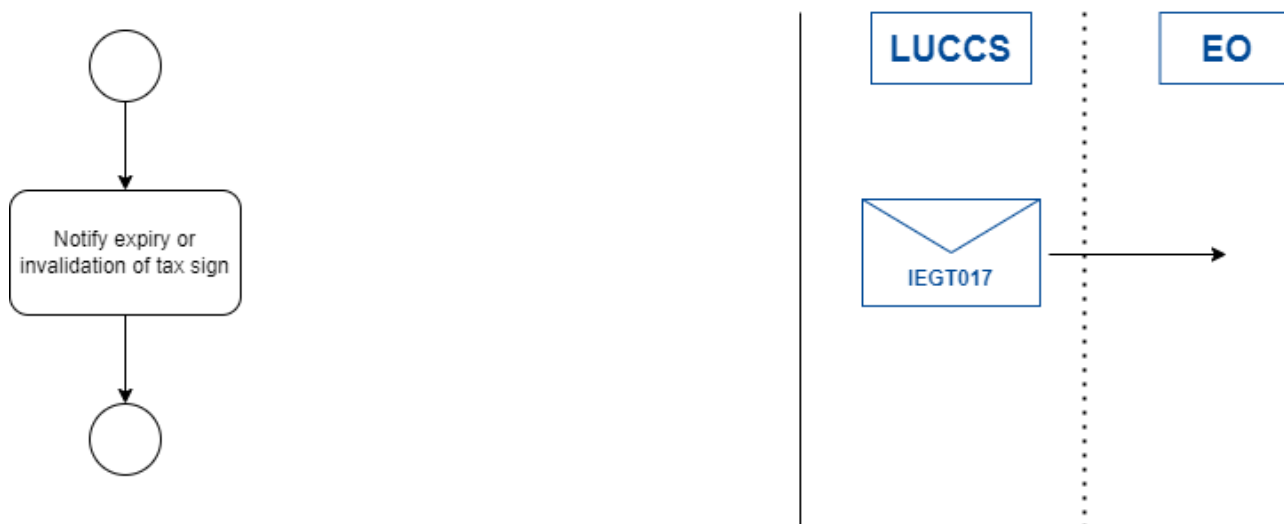


Figure 19: Notify expiry or invalidation of tax sign – Messages & Flow

Activity	Description	Involved message(s)
Notify tax sign update	This activity corresponds to the sending of the Notify Warehousekeeper Tax Sign Update message.	IEGT017: Notify Warehousekeeper Tax Sign Update [LUCCS to EO] This message is issued to inform the economic operator that tax signs have expired or are approaching expiry. The structure of this message is defined in "CCGT017A.xsd".

Table 23: Notify expiry or invalidation of tax signs – Task descriptions

5.15 NOTIFY AUTHORISED WAREHOUSEKEEPER OF CUSTOMS MOVEMENT CREATION

In some scenarios, actions are performed for an authorised warehousekeeper without having received a request from the warehousekeeper.

This is the case when one of the economic operator's commercial brands is updated by a customs officer, when a movement is created by a customs officer via BOP, when tax signs have expired and are exited from the inventory, when movements are created to regularise the warehousekeeper's inventory following the inventory control, or during the inventory liquidation process.

To notify the warehousekeeper of the movement creation, a Customs Movement Notification is sent to the economic operator via NTP/B2G. Figure 20 and Table 24 provide details about the message flow.



Figure 20: Notify customs movement creation – Messages & Flow

Activity	Description	Involved message(s)
Notify movement creation	This activity corresponds to the sending of the Customs Movement Notification message.	<p>IEGT020: Customs Movement Notification [LUCCS to EO]</p> <p>This message is issued to inform the economic operator that a action has been performed / a movement has been created by the customs administration.</p> <p>The structure of this message is defined in "CCGT020A.xsd".</p>

Table 24: Notify customs movement creation – Task descriptions

5.16 SUSPEND ACTIVITIES OF AUTHORISED WAREHOUSEKEEPER

In case an authorised warehousekeeper account is suspended or unsuspended by the customs administration, the economic operator is notified about the account update.

For this purpose, a Warehousekeeper Status Update message is sent to the economic operator via NTP/B2G. Figure 21 and Table 25 provide details about the message flow.

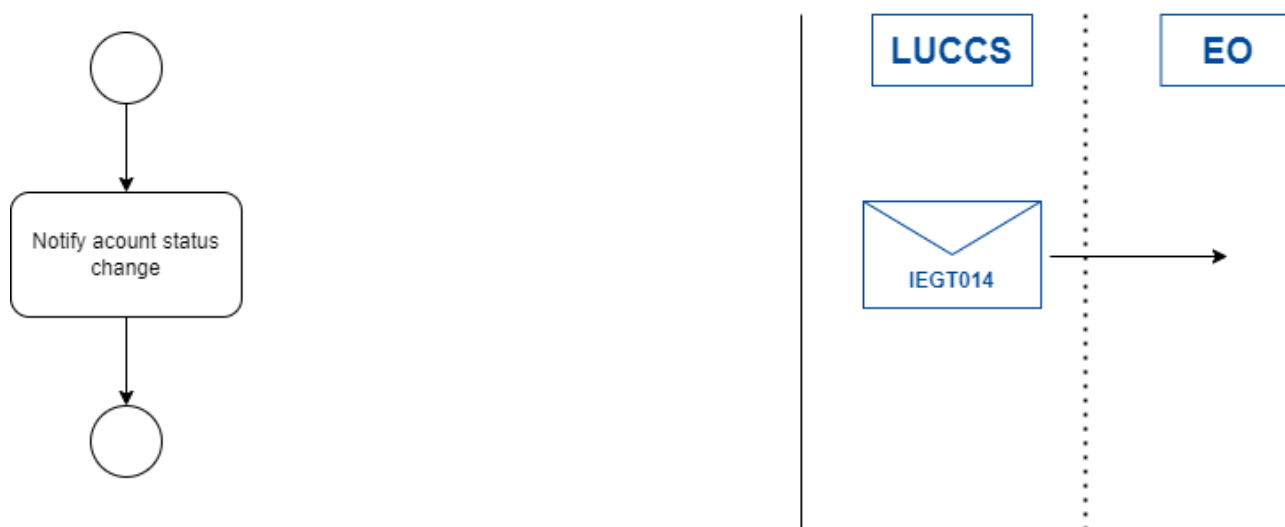


Figure 21: Notify suspension – Messages & Flow

Activity	Description	Involved message(s)
Notify account update	This activity corresponds to the sending of the Warehousekeeper Status Update message.	<p>IEGT014: Warehousekeeper Status Update [LUCCS to EO]</p> <p>This message is issued to inform the economic operator that their account status has been updated.</p> <p>The structure of this message is defined in “CCGT014A.xsd”.</p>

Table 25: Suspend activities of authorised warehousekeeper – Task descriptions



5.17 DEACTIVATE AUTHORISED WAREHOUSEKEEPER ACCOUNT

Following the inventory liquidation, the account of an authorised warehousekeeper can be deactivated. This action cannot be undone and when their account is deactivated, the warehousekeeper can no longer perform any actions.

In case an authorised warehousekeeper account is deactivated by the customs administration, the economic operator is notified about the account update.

For this purpose, a Warehousekeeper Status Update message is sent to the economic operator via NTP/B2G.

The message flow is detailed in Figure 21 and Table 25 above.

6 APPENDIX

6.1 BUSINESS PROCESSES

6.1.1 DESCRIPTION

The diagrams of the different business processes provide a visual representation of the expected system behaviour and message exchanges.

6.1.2 LOCATION

The business processes are stored in the "Appendix" folder > "1. Business processes" subfolder.

6.2 XSD SCHEMAS

6.2.1 DESCRIPTION

The GESTTAB-specific messages follow the IEGT[nn].XSD patterns.

6.2.2 LOCATION

The XSD schemas specific to GESTTAB are stored in the "Appendix" folder > "2.Messages" subfolder > "XSD Schemas".

Sample messages are also provided and can be found in the "2. Messages" subfolder > "XML Schemas"

6.3 CODE LISTS

6.3.1 DESCRIPTION

The code lists which are used in to validate messages. Note that the code list version which is stored in the appendix is the version which is valid at the publication date of this document and that code-list may evolve over time.

6.3.2 LOCATION

All code lists are stored in the "Appendix" folder > "3. Code lists" subfolder.



6.4 VALIDATION RULES

6.4.1 DESCRIPTION

All messages must be evaluated against a set of validation rules.

6.4.2 LOCATION

The validation rules are stored in the "Appendix" folder > "4. Validation rules" subfolder.