



Portal Gesttab

MIG

Message Implementation Guide

Summary

1	Introduction	3
2	Register procedure for B2G economic operators	4
2.1	Procedure	4
2.2	Contact	4
3	Messages	5
3.1	XML Messages	5
3.2	XSD Diagrams	5
4	Portal Gesttab - Specifications	6
4.1	Creation of a sign Order	6
4.1.1	<i>Description of process</i>	6
4.1.2	<i>Definition of messages</i>	6
4.2	Creation of a daily Entry	7
4.2.1	<i>Description of process</i>	7
4.2.2	<i>Definition of messages</i>	7
4.3	Creation of a warehouse Exit	8
4.3.1	<i>Description of process</i>	8
4.3.2	<i>Definition of messages</i>	8
4.4	Creation of a release for Consumption	9
4.4.1	<i>Description of process</i>	9
4.4.2	<i>Definition of messages</i>	9
	Appendix	10
A.1	XSD	10
A.2	Code list	10
A.3	Rules	10
A.4	User Guide	10
A.5	Messages Templates	10

1 Introduction

The purpose of this document is to describe the specifications of a B2G interface established between the Customs and Excise administration and an economic operator.

The document begins by detailing the registration procedure to do in order to have access to the Gesttab Portal application.

In the following section, the messages used for communication will be presented as well as the format to be followed when sending messages.

The Sign Order, Entry, Exit and Release for Consumption processes will then be detailed by representing the flow of messages and their significations.

Finally, the various appendices of the MIG will be presented with all the latest information needed.

2 Registration procedure for B2G economic operators

B2G (Business To Government) is a method of electronic transmission of declarations. This takes the form of sending messages in XML format between the system of the economic operator and that of the Customs and Excise Administration via a secure protocol. Data exchanges are secured by LuxTrust SSL server certificates.

The following procedure describes the different steps to be followed for economic operators in order to register and communicate with the B2G system of the Customs and Excise administration.

2.1 Procedure

To have access to the Portal Gesttab application in B2G mode, here is the procedure to follow:

Step 1: The economic operator makes a request for "Luxtrust SSL Certificates of the e-file type".

Step 2: The economic operator completes and sends back the form "Authorization request for the Gesttab Portal application" available on the website of the Luxembourg Customs and Excise Administration.

Step 3: The Luxembourg Customs and Excise Administration processes the economic operator's request and notifies him of the activation of his account for the Gesttab Portal application requested.

Step 4: The economic operator chooses the B2G exchange software that he wishes to use to establish B2G communication between his system and that of the Customs and Excise Administration.

Step 5: The economic operator and the Customs and Excise Administration configure the B2G identifier.

Step 6: The economic operator downloads the XSD diagrams and annexes files of the Gesttab Portal application.

Step 7: The economic operator and the Customs and Excise Administration test the configurations between their systems.

Step 8: The economic operator and the Customs and Excise Administration implement the production environment.

2.2 Contact

Contact	Role	Email	Tel
Edouane PLDA	Technical and functional support	servicesdesk@do.etat.lu	+352 2818 2000

3 Messages

3.1 XML Messages

The format of the messages used must comply with the standard indicated by the Customs and Excise administration, this is the XML format.

In B2G mode, all customs applications including the Gesttab Portal are based on this format for exchanges with economic operators.

These standards are available on the Customs and Excise website <https://douanes.public.lu/fr.html> in the **EDOUANE** section.

The following part of this document defines the messages used in the various processes of the Gesttab Portal application, all the XSD diagrams required for the creation of XML messages are described in appendix A.1.

3.2 XSD Diagrams

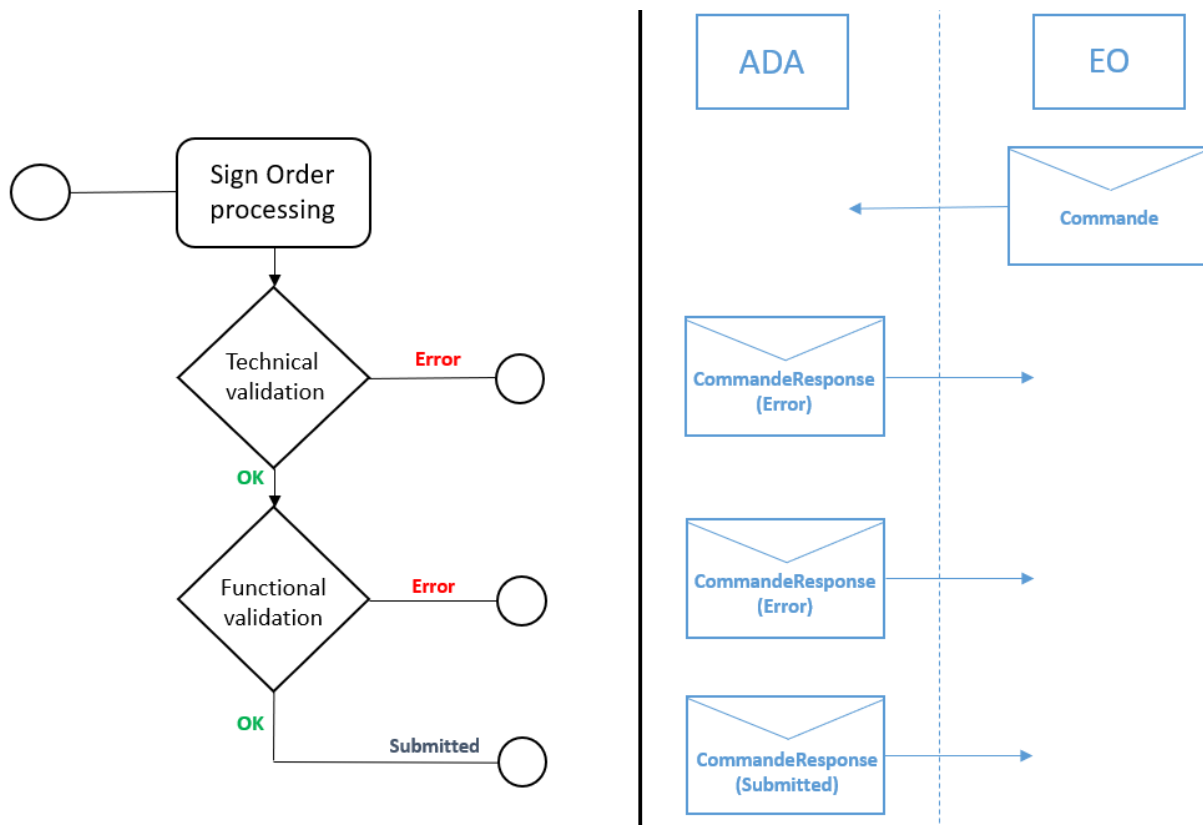
XSD diagrams were created in order to formalize the content of the messages as well as the constraints related to the different fields present in the messages.

The definitions of XSD diagrams are included in Appendix A.1 - XSD.

4 Portal Gesttab: Specifications

4.1 Creation of a sign Order

4.1.1 Description of process



4.1.2 Definition of messages

4.1.2.1 Commande Message

This message is submitted to the Gesttab Portal application by the economic operator for the purpose of creating a sign order. The message must contain all the necessary information, the structure of this message is defined in the XSD "SigFisc.xsd".

4.1.2.2 CommandeResponse Message

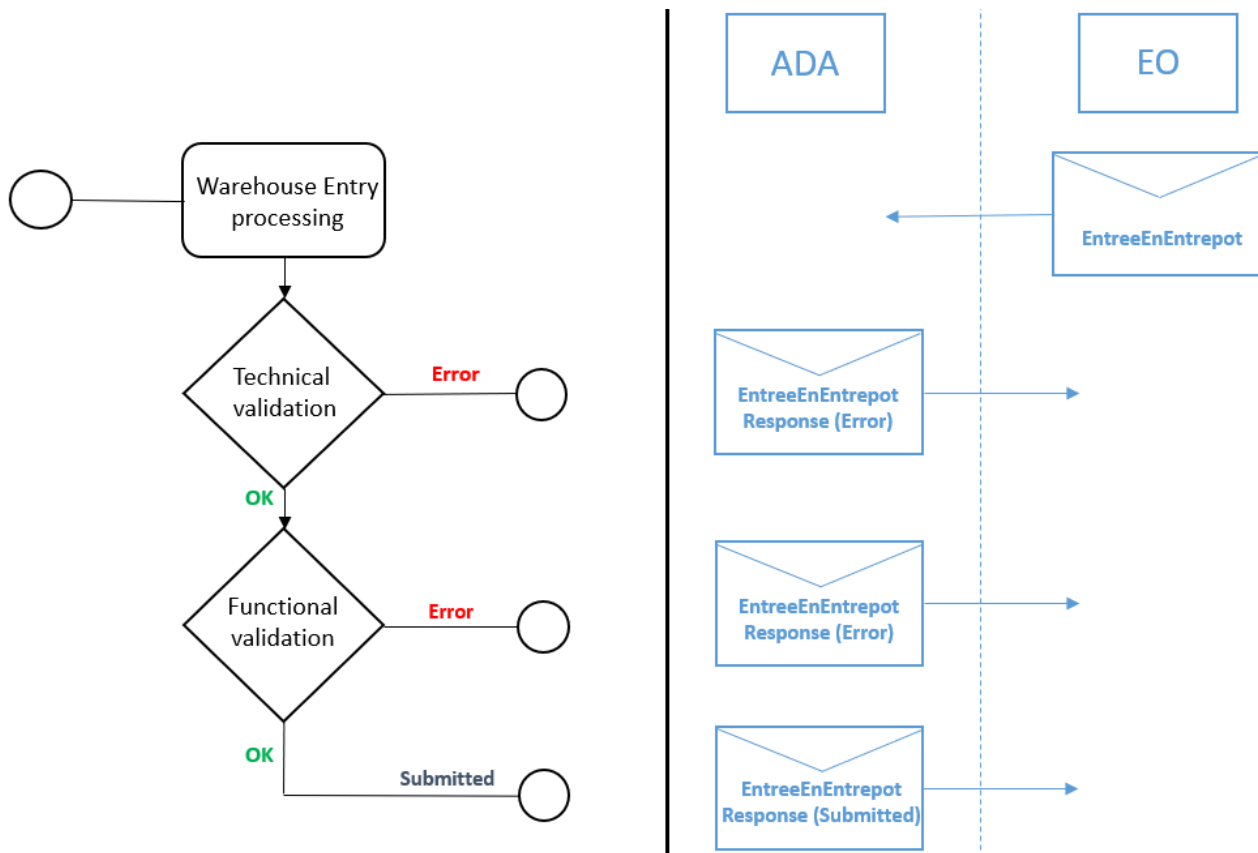
This message is returned to the economic operator when a Commande message has been sent. It can contain two different status:

- Submitted Status: The process is ongoing (note: one second validation should be performed by another system).
- Error Status: The Commande message contains one or more errors which may be technical or functional.

The structure of this message is defined in the XSD "SigFisc.xsd".

4.2 Creation of a warehouse Entry

4.2.1 Description of process



4.2.2 Definition of messages

4.2.2.1 EntreeEnEntrepot Message

This message is submitted to the Gesttab Portal application by the economic operator for the purpose of creating a warehouse entry. The message must contain all the necessary information, the structure of this message is defined in the XSD "SigFisc_Entree.xsd".

4.2.2.2 EntreeEnEntrepotResponse Message

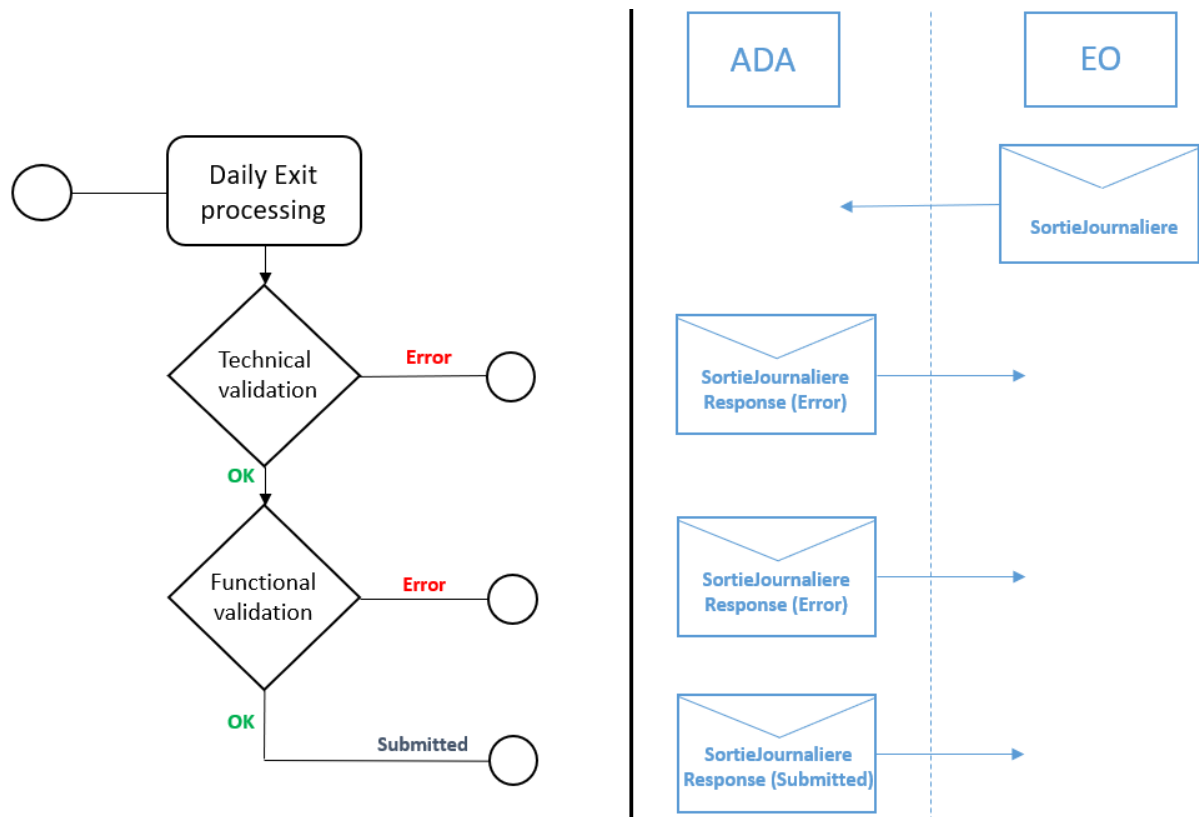
This message is returned to the economic operator when an EntreeEnEntrepot message has been sent. It can contain two different status:

- Submitted Status: The process is ongoing (note: one second validation should be performed by another system).
- Error Status: The EntreeEnEntrepot message contains one or more errors which may be technical or functional.

The structure of this message is defined in the XSD "SigFisc_Entree.xsd".

4.3 Creation of a Daily Exit

4.3.1 Description of process



4.3.2 Definition of messages

4.3.2.1 SortieJournaliere Message

This message is submitted to the Gesttab Portal application by the economic operator for the purpose of creating a daily exit. The message must contain all the necessary information, the structure of this message is defined in the XSD "SigFisc_Sortie.xsd".

4.3.2.2 SortieJournaliereResponse Message

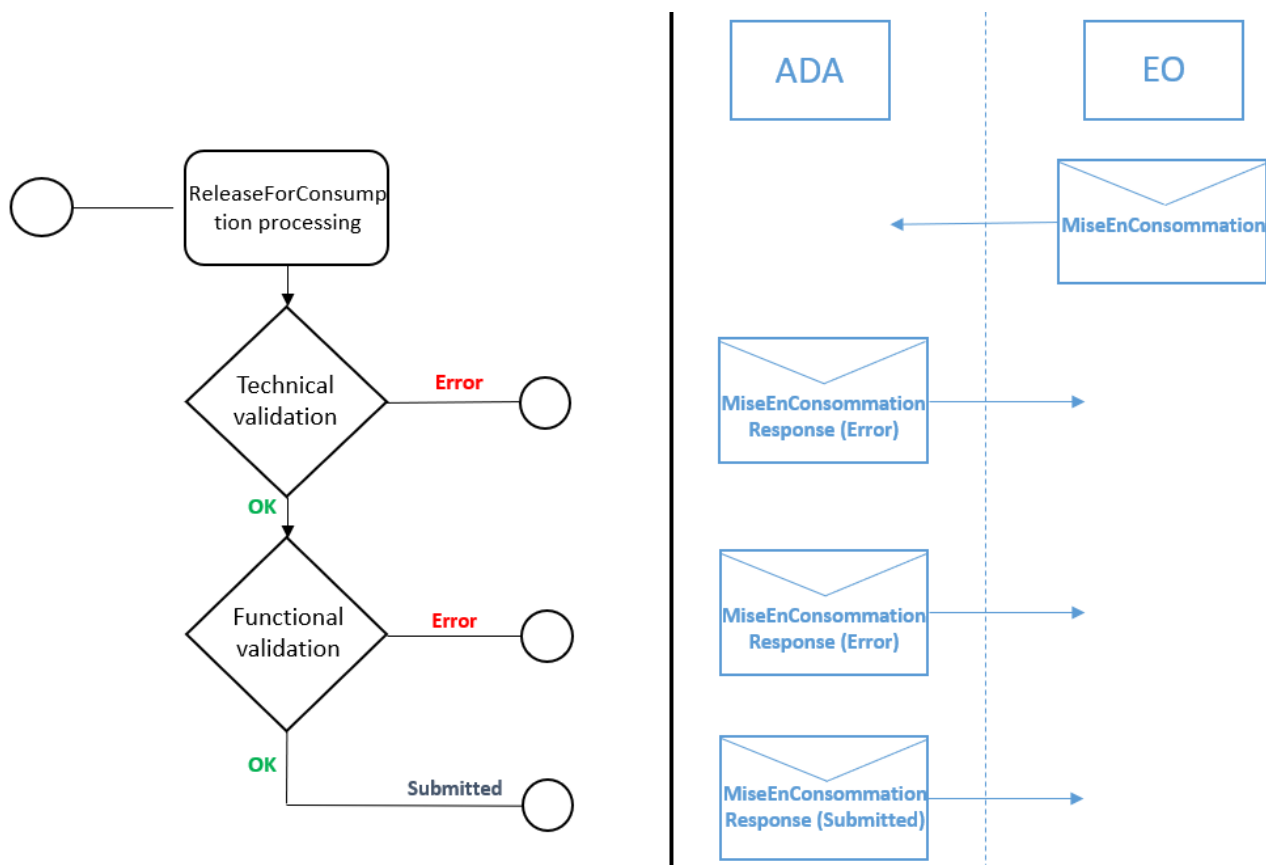
This message is returned to the economic operator when a SortieJournaliere message has been sent. It can contain two different status:

- Submitted Status: The process is ongoing (note: one second validation should be performed by another system).
- Error Status: The SortieJournaliere message contains one or more errors which may be technical or functional.

The structure of this message is defined in the XSD "SigFisc_Sortie.xsd".

4.4 Creation of a release for Consumption

4.4.1 Description of process



4.4.2 Definition of messages

4.4.2.1 MisEnConsommation Message

This message is submitted to the Gesttab Portal application by the economic operator for the purpose of creating a ReleaseForConsumption. The message must contain all the necessary information, the structure of this message is defined in the XSD "SigFisc_MisEnConsommation.xsd".

4.4.2.2 MisEnConsommationResponse Message

This message is returned to the economic operator when a MisEnConsommation message has been sent. It can contain two different status:

- Submitted Status: The process is ongoing (note: one second validation should be performed by another system).
- Error Status: The MisEnConsommation message contains one or more errors which may be technical or functional.

The structure of this message is defined in the XSD "SigFisc_MisEnConsommation.xsd".

Appendix

A.1 XSD

A.1.1 DESCRIPTION

This appendix contains the XSD files to use for the construction of the messages used in the Portal Gesttab application.

A.1.2 LOCATION

The files [SigFisc.xsd](#), [SigFisc Entree.xsd](#), [SigFisc MiseEnConsommation.xsd](#), [SigFisc Sortie.xsd](#) and [baseTypes.xsd](#) are present in folder: [A.1 – XSD](#).

A.2 CODE LIST

A.2.1 DESCRIPTION

This appendix contains the code list used in the Portal Gesttab application.

A.2.2 LOCATION

The file [Especes.xlsx](#) is present in folder: [A.2 – Code List](#)

A.3 RULES

A.3.1 DESCRIPTION

This appendix contains the rules used in the Portal Gesttab application.

A.3.2 LOCATION

The file [Rules.xlsx](#) is present in folder: [A.3 – Rules](#)

A.4 USER GUIDE

A.4.1 DESCRIPTION

This appendix contains the user guide of Portal Gesttab application WEB version.

A.4.2 LOCATION

The file [PortailGesttab – User Guide.pdf](#) is present in folder: [A.4 – User Guide](#).

A.5 MESSAGES TEMPLATES

A.5.1 DESCRIPTION

This appendix contains the Portal Gesttab messages templates used in the Portal Gesttab application.

A.5.2 LOCATION

The templates used for [Commande](#), [EntreeEnEntrepot](#), [MiseEnConsommation](#) and [SortieJournaliere](#) are present in folder: [A.5 –Messages Templates](#).